

**INSIDE....**

Senior Chatter.....pg. 06  
 Real Estate.....pg. 04  
 Death Notices & Editorial.....pg.05  
 Services.....pg.12-13  
 Dining/Entertainment.....pg. 02  
 Recreational.....pg. 11  
 Bows/Guns.....pg. 11  
 Pets.....pg. 11  
 Specialty Shops.....pg. 06  
 Help Wanted.....pg. 14  
 Bids & Notices.....pg. 03  
 Area Events.....pg. 03



# Free Pioneer Express

Serving the Headwaters Region of Northeast Wisconsin

# FREE Classifieds Are Back!

[www.PioneerExpressCrandon.com](http://www.PioneerExpressCrandon.com)  
 Our Deadline is Tuesday at 4:00 p.m.

Presorted Standard U.S. Postage Paid Crandon WI Permit No. 410

Postal Patron Local

Volume 29, No. 38, January 05, 2015 (715) 478-3640 or 1-800-234-2152 Fax: (715) 478-3540 email: pionexp@newnorth.net



## Forest County snowmobile trails have opened

Forest County Snowmobile Trails have officially opened at noon Monday, December 29, 2014 for the snowmobiling season. Forest County has 405.79 miles of state funded trails maintained by five snowmobile clubs including the 100 Mile Snow Safari, Lumberjack Memorial Trails, Black Bear Sportsmen's Club Trails, Three Lakes-Brule River Trails and the Tombstone-Pickerel Trails.

Snowmobile clubs have been panning the trails and have all trails cleared and signed. Many trails will only be in fair condition on the opener due to former unfrozen ground and warm temperatures. Please use caution on all trails, especially in wetlands that may have water or slush for the next few days. With recent snowfall and plummeting temperatures, trail conditions will improve greatly in the next few days.

If you appreciate smooth trails now is the time to volunteer some time, effort or cash at one of the donation boxes found at our area businesses that sponsor our trail system. Support our local snowmobile clubs! New snowmobile maps are also available at local businesses thanks to a sizeable donation by the Sugarbush Snowmowheelers. Thank you Snowmowheelers! This annual donation and trail updates by Dan Peters results in an awesome snowmobile trail map!

Please remember that the Nicolet State Trail and the Wolf River State Trail are the ONLY snowmobile trails in Forest County that are currently open for ATV and UTV use. The Forest County Snowmobile Trail Ordinance currently prohibits ATV, UTV use and motor vehicle use on all other snowmobile trails in Forest County. Snowmobile trails are "NOT" open for motor vehicle use or hunting. Those driving trucks on trails are subject to fines through the County Snowmobile Trail Ordinance.

Updated trail condition reports can be found daily by calling the Forest County Snowline at 715-478-2040 or logging onto the Forest County website at [www.forestcountywi.com](http://www.forestcountywi.com). This website also provides links to local snowmobile clubs which provide daily grooming reports and maps of the Forest County trail system.

The Department of Tourism also provides statewide snowmobile travel conditions at [www.travelwisconsin.com/snow-conditions-report/snowmobile](http://www.travelwisconsin.com/snow-conditions-report/snowmobile).



This picture of a pileated woodpecker looking for insect larvae for lunch was taken this winter. He was working over an old maple tree behind the car wash in the City of Crandon during the last warm spell. There are pileated pecking holes in the old trees still standing in the courthouse square, and this is possibly the same bird. Pileated woodpeckers are usually found in deep woods situations and down in spruce and balsam swamps in the winter months. They add a splash of color to a winter day.



## Learn about climate change from U.W. Madison & the Crandon Library

Ever wonder how global warming affects the Northwoods of Wisconsin? Will it have an impact on Forest County's tourism industry? How about our logging industry? Dramatic reports from the Arctic and Sahara don't seem to translate to life in the upper Midwest. Yet the scientists at UW-Madison have studied it thoroughly, and they're excited to share what they know.

The Crandon Public Library is one of 21 libraries across the state that has joined forces with UW-Madison and Wisconsin Library Services to deliver a Massive Open Online Course (MOOC) on Changing Weather and Climate in the Great Lakes Region. The free online course will run from February 23 to March 31; enrollment is underway at [www.coursera.org/course/greatlakesclimate](http://www.coursera.org/course/greatlakesclimate).

MOOCs are non-credit classes that allow people to participate no matter where they live, as long as they have an internet connection. They sign up online and watch videos, participate in discussion forums, read

Continued on page 13

## Free Personal Classifieds Through January 2015 in the Pioneer Express!

It is time to clean out the basements and the closets and move your unwanted junk to a new owner.

The Pioneer is willing to help you find those new owners by offering you FREE Personal Classifieds in January 2015.

One free ad per week, and if you want it repeated, you must call it in or email it for the second printing.

Happy New Year from the Pioneer Express!

## Revolving Loan Fund to open in Forest County

The Forest County Economic Development Partnership is excited to announce the formation of the Forest County Revolving Loan Fund. Through partnerships with Associated Bank, CoVantage and Laona State Bank over \$80,000 has been developed for the fund.

The fund will be administered through Northern Economic Development Corporation, a non-profit 501c3 Forest County entity formed for just this purpose through FCEDP.

What is a revolving loan fund?

A revolving loan fund (RLF) is a gap financing measure primarily used for development and expansion of small businesses. It is a self-replenishing pool of money, utilizing interest and principal payments on old loans to issue new ones. While the majority of RLFs support local businesses, some target specific areas such as healthcare, minority business development, and environmental cleanup.

Establishing a revolving loan fund provides access to a flexible source of capital that can be used in combination with more conventional sources. Often the RLF is a bridge between the amount the borrower can obtain on the private market and the amount needed to start or sustain a business. For example, a borrower may obtain 60 to 80 percent of project financing from other sources.

Quality RLFs issue loans at market or otherwise competitive and attractive rates. Many RLF studies have shown that access to capital and flexibility in collateral and terms is more important to borrowers over lower than market interest rates. RLF programs should be built on sound interest rate practices and not perceived as free or easy sources of financing. RLFs must be able to generate enough of an interest rate return to replenish the fund for future loan allocations. With competitive rates and flexible terms, a RLF provides access to new financing sources for the borrower, while lowering overall risk for participating institutional lenders.

Eligible uses for RLF loans include:

- \*\* Operating capital
- \*\* Acquisition of land and buildings
- \*\* New construction

Continued on page 14

## Federal court decision relists gray wolves in western Great Lakes region as endangered species

DNR News Release

MADISON - In response to a lawsuit brought against the United States Fish and Wildlife Service, the Federal District Court for the District of Columbia has vacated a 2012 decision, which delisted wolves as an endangered species.

This decision returns wolves in the Great Lakes Region, including Wisconsin, to the Federal Endangered Species List.

Wisconsin Department of Natural Resources and Department of Justice legal staff are reviewing the decision to determine how it will impact Wisconsin's wolf management program. Further information will be available following this review.

Immediate implications of this ruling include the following:

Permits which allow lethal removal of wolves issued to landowners experiencing wolf conflicts are no longer valid. The department will contact permit holders to alert them.

The department is not authorized to use lethal control as part of its conflict management program. Non-lethal tools and depredation compensation remain available. Those experiencing conflicts with wolves should contact the United States Department of Agriculture - Wildlife Service for conflict investigation and management assistance. USDA Wildlife Services can be reached at 800-228-1368 in northern Wisconsin or 800-433-0663 in southern Wisconsin.

Wisconsin's law allowing landowners or occupants of the land to shoot wolves that are in the act of depredating domestic animals on private property is no longer in force. Landowners may not kill wolves in the act of attacking domestic animals.

Under Federal Law, you cannot use dogs to track and train on wolves.

Wisconsin is not authorized to implement a wolf harvest season.

While the department is disappointed by this decision, we will continue to support USFWS and their original decision to delist and remain confident in the State of Wisconsin's ability to manage our wolf population.



**Disco Party**  
at Pack 'Em Inn  
**January 17<sup>th</sup>**  
at 8 pm  
Entertainment by Strait Jacket

**KARAOKE PARTY**  
**January 16th & 30th**  
**8 pm - ???**  
Karaoke by Strait Jacket




**New Years Eve Specials**  
Chef Charlie will be serving his favorite specials!

- Seafood Platter (Lobster, Shrimp & Scallops)
- Prime Rib
- Porterhouse • T - Bones
- Tenderloin

**HILL'S STILL**  
SUPPER CLUB & CATERING  
Pearson, WI  
5 miles past Mole Lake Casino  
(715) 484-3211 or 484-2100

New Year's Eve - Open at 4 p.m.  
New Year's Day - Open at 11 a.m.  
Open All Week!

715-478-1059  
FREE WIFI

**BEACHSIDE**  
BAR & GRILL Lake Metonga  
Mon & Wed - Thurs open at 3:00 pm  
Fri-Sun open at 11:30 am  
Closed Tuesdays

Friday Fish Fry & Saturday Steak Specials  
-Wednesday-  
**\$10 ALL YOU CAN EAT**  
Chicken Wings  
boneless & traditional  
Dine In Only



**POST LAKE INN**

**BROASTED CHICKEN DINNER SERVED DAILY!**

- **HOMEMADE PIZZAS** Including: *BLT & Memphis Pulled Pork*
- **AWESOME BLOODY MARYS**
- **FRIDAY FISH FRY • FREE WIFI**

SAT & SUN AT 10 A.M.  
WEEKDAYS AT 11 A.M. - CLOSED TUESDAYS  
Located in Beautiful Downtown  
Post Lake • 715-275-3611

**Donovan's Trailside Inn**  
Bar - Restaurant - Motel

\* In addition to our full menu \*  
**Daily Specials**

Offered Tuesday-Thursday  
Fri. - Fish Fry - Perch, Cod & Walleye  
Homemade German Potato Salad!  
Sat. - Ribs, Steak, Prime Rib & Shrimp  
Winter Hours: Open at 3 p.m. Tuesday - Friday  
Open at 11:00 a.m. Saturday  
CLOSED SUNDAY & MONDAY • Dinner Specials Start at 4 p.m.  
715-484-3045 • Located in Pearson  
Intersection of Hwy. 55 & T, on Hwy. 55

**CHECK OUT OUR SELECTION OF 10 CRAFT BEERS ON TAP. WOW!!! STRIP TICKET HAPPY HOUR 4:30 - 6 PM WITH FREE SNACKS WEDNESDAY - FRIDAY. THURSDAY 35¢ WINGS**

**SATURDAY SUPPER CLUB MENU**  
WE WILL BE CLOSED JANUARY 3 AND JANUARY 17 FOR PRIVATE PARTIES. SORRY FOR THE INCONVENIENCE.

FULL MENU AVAILABLE AT [www.hotelcrandon.com](http://www.hotelcrandon.com)

**WEEKLY SPECIALS: Jan 5 - 11**  
Monday: Betty's Indian Tacos \$6.75  
Tuesday: Pork Riblet Basket \$7.95  
Wednesday: Meatloaf Dinner \$8.25  
Thursday: Baked Chicken Dinner \$8.95  
Friday: Fish Fry \$9.25  
Tenderloin & Ribeye Dinners now available DAILY!

**Hotel Crandon** North Lake Avenue Downtown Crandon  
715-478-2414  
OPEN WED. & THURS. EVENINGS 4:30 - 8 P.M.  
Breakfast: Mon. - Sat., 6 - 11 a.m.; Lunch: Mon. - Fri., 11 a.m. - 1:30 p.m.  
Friday Dinner: 4-8 p.m., Saturday Dinner: 5-8 p.m., Sundays: 7 a.m. - 1 p.m.



**Wild Rose**  
PUB & GRILL

County W, Wabeno  
715-473-2129

**Daily Specials**  
**Monday**  
Half Off Appetizers  
**Wednesday**  
\$3.00 Cheeseburgers  
**Thursday**  
50¢ Wings  
**Fri & Saturday**  
Fish Fry  
Cod, Perch & Shrimp  
**Sunday**  
Fried Chicken Dinner

**Wed - Mon**  
**11 am - Close**  
**Closed Tuesday**



## Area Events

### Come join us in worship at the **Community Church of Mole Lake**

We are a nondenominational church that uses the Bible as our authority for faith and practice. We learn the truth of God's word through verse by verse exposition of the Scripture.

**Worship Service: 10 a.m.**

**Guest Speaker: Richard Perik**

**Sermon Topic: (Genesis 1-3)**

**Why Does God Allow Bad Things To Happen**

**2973 Highway 55, Crandon • 715-784-0250**

### Come Worship With Us

**Rev. Callistus I. Elue**

**Mass Times:**

Saturday's - 5:00 p.m.

Sunday's - 9:00 a.m.

**Confessions:**

Saturday's 9-10 a.m.

**St. Joseph Catholic Church**

208 North Park Ave., Crandon 54520 • 715-478-3396

**Daily Mass Times**

(Consult the weekly bulletin for any week day Mass changes)

• Tuesday's - 6:00 p.m.

• Wednesday's - 12 Noon

• Thursday, Adoration & Mass - 6:00 p.m.

• Friday - 12 Noon

## Still Smoking

207 N. Lake Ave.  
Crandon

### Close out while supplies last!

Crown E-Juice 12ml was \$5.99, now \$3.99

Midwest E-Juice 10 ml was \$5.99, now \$2.00

We have the only build your own E-cigarette shop in the county!

Stop, shop and save at Still Smoking.

We are your E-cigarette headquarters.

### Still Smoking

on Main Street Crandon, between Duck's and Pickers.

(715) 478-4059

Betc22

## Bids & Notices



## SOKAOGON CHIPPEWA HEALTH CLINIC

3144 VanZile Road - Mole Lake - 715-478-5180



We are accepting patients with Medicare, Medicaid, Badgercare, and most private insurances. Please call to find out if we can fulfill your medical or dental needs and schedule an appointment.

### Medical Providers



**Dr. Richard Bradner, MD**

Tuesday and Wednesday

8:00 am to 4:30 pm



**Shelly Buch, RN, MSM, FNP-C**

Mon, Wed, Thurs, and Friday

8:00 am to 4:30 pm

### Dental Department



**Dr. Jeffrey Nielsen, DDS**

Caron Hartman-Zager, Dental Asst (L)

Amber Johnson, RDH (R)

Monday - Thursday 8:00 am - 4:00 pm

## Public Library Hours

**Lakes Country Public Library** - Lakewood - Monday, Tuesday & Thursday 9:00 a.m. - 5:00 p.m.; Wednesday and Friday 2:00 p.m. - 8:00 p.m.; Saturday 9:00 a.m. - 2:00 p.m. • 715-276-9020.

**Wabeno Public Library** - Tues & Fri. 10 a.m. - 5 p.m.; Wed. & Thurs. Noon - 5; Sat. 9 - Noon. Closed MONDAYS & SUNDAYS. Wifi signal: 8 a.m.-9 p.m., 7 days/week. 715-473-4131

**Crandon Public Library** - Monday, Tuesday & Friday 9:00 a.m. - 5:00 p.m.; Wednesday 9:00 a.m. - 7:00 p.m.; Thursday 9:00 a.m. - 7:00 p.m.; Saturday 9:00 a.m. - Noon • 715-478-3784.

**Laona Edith Evans Community Library** - SUMMER HOURS: Monday - Friday 8:00 a.m. - 2:00 p.m. & extended hours on Tuesday 5:00 - 7:00 p.m. CLOSED Saturday & Sunday • 715-674-4751

## Museum Hours

**Forest County Museum** - Closed for the winter season. Summer Hours: 10-4 on Tuesday, Thursday, Friday and Saturday.

**Forest County Potawatomi Cultural Center & Museum** - Monday -Thursday 7 a.m. - 5 p.m. If you have special research needs or want to inquire about collection, please call 715-478-4841.

**Wabeno Museum** - Memorial Day - Through Labor Day - Monday-Thursday: 11:00 a.m.- 4:00 p.m.; Friday-Saturday: 10:00 a.m.- 5:00 p.m.; Sunday: 10:00 a.m. - 4:00 p.m.

## CRANDON CELLULITE SISTERS ACTIVITY NOTICE



**WHAT: Coffee & Treats/Planning Meeting for 2015**

**WHEN: Wednesday, January 7th at 10 am**

**WHERE: Crandon Public Library Meeting Room, Lower Level**

**Questions or Input:**

Carol - 715-478-2749

**HOPE TO SEE THERE.**

## COMMUNITY BILLBOARD

• **St. John's Lutheran Church (LCMS)** - Worship at 9 a.m. Sunday and 6 p.m. Monday. Wednesday - children's after school. Located at N9834 Hwy. 55 in Pickerel. Call 715-484-3382 for more information.

• **AA Meetings** - Back Door Group - Open meetings Monday & Thurs. Nights @ 7 p.m., Lakewood Lakes Country Library. Call Mary 715-276-2318 or Bill 715-882-3512.

• **Forest Cty. Humane Society** - Open to Public every Sat. from 1-3 p.m./ Call for more info. 715-478-2098.

• **AA Meeting** - Saturdays, 9 a.m., Wabeno Fire Station, side entrance.

• **Crandon VFW Post** - Meets the second Tuesday of the month. 1:30 p.m. at the VFW building, 104 N Forest.

• **Support Group for Parent of Children with Disabilities** - Call Chris at 715-784-0058

• **Crandon Lions Board Meetings** - 1st Monday of the month at Crandon Library at 6 p.m. (downstairs). Member Meeting - 3rd Monday of month at 5:30 p.m.; Oct., Nov. and Dec. at Duck's Bar.

• **Bridge Community Dental Health Clinic** - This project serves people of all ages in Forest County for People who have Badger Care, medical Assistance & UNINSURED to schedule an appointment call (715) 848-4884. Call the Health Dept. for more information at 715-478-3371.

• **Good Shepard Lutheran Church** - Hwy 55N, Crandon. Sunday service 9:30 a.m. with Communion on 1st & 3rd Sunday. Wednesday service at 6pm with Communion on 2nd & 4th Wednesday. No Saturday services.

• **Christian Motorcyclist Association** - Spirit Ryders Chapter of Langlade & Forest Co. Invites you to attend out monthly meetings on the last Saturday of each month. Call George 715-350-1679.

• **Crandon PTO** - 1st Monday of month, 6-7 p.m., Elementary Cafeteria.

• **Wellbriety 12 Step Meeting (AA/NA)** - Monday nights, 6 p.m. - ? lower level of FCP Museum, Mish•Ko•Swin Lane, Crandon. Call Brooks Boyd for more information at 715-889-4902

• **Town of Lincoln Board Meetings** - 2nd Monday of each month, 6 p.m., Town of Lincoln Hall.

• **AA Meeting** - Antigo Hospital, Saturdays at 7:00 p.m.

• **Forest County Humane Society Meeting** - Every Fourth Monday of the month, 6:30 p.m., Crandon Library.

• **Highway 55 Flea Market** - Will be closed until April 2015. Every Wednesday, 9 a.m. - 3 p.m., at the Nashville Town hall, corner of Hwys. 55 & B, Crandon Interested vendors or for more information call Linda at 715-484-7271.

• **AA meeting** - Crandon AA Big Book Study group - Thursdays, 7-?, New location, VFW Post Hall, 104 N. Forest Ave., Crandon, behind the Laona State Bank parking lot Contact # 715-784-6077.

• **Tops** - will meet at Wabeno Town Hall on Mondays. Weigh in at 7:30 am with meeting following at 7:45. For more info call 715-473-2613.

• **AA Meeting** - White Lake, Sunday Morning, 10:00 AM at the White Lake Fire House. Mike - 175-882-8901 or Bill - 715-882-3512

• **Craft & Food Fair** - Every Friday, noon - 5 p.m. at Sunnyside Church in Carter. For more information call Roy at 715-473-4800.

• **AA Meeting** - Every Tuesday at 7 p.m. at Carter Springs. Contact Peggy at 715-889-3116 for more information.

# \$10K PAYDAY

REGISTER BY 5PM  
DRAWING AT 7PM

JANUARY 10, 17 & 24

WIN CASH  
FREE PLAY & HOTEL STAYS!



VISIT MOLELAKECASINO.COM FOR DETAILS

The **20-20-10 \$50** | \$20 HOTEL  
\$20 FREE PLAY  
\$10 FOOD  
SUN-THURS ONLY  
*Getaway!*

**MOLE LAKE CASINO LODGE**

GET YOUR LUCKY BREAK!

PO Box 277 | 3084 State Hwy 55 | Crandon, WI | 1.800.236.WINN (9466) | molelakecasino.com



## Remember Your Gift of Health!

Join Tri Fitness! There are many classes to choose from, new friends to meet, personal guidance and programs. There is no excuse! Make your resolution to put yourself first! All research and statistics indicate that exercise is the best overall thing you can do to live a long, happy and productive life.

**Christmas Gift Certificates Available**

**Turn Over That New Leaf Today!**

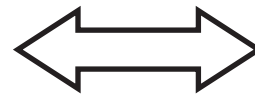
**JOIN BEFORE JANUARY 15 AND SAVE 50% ON REGISTRATION!**

**CLASSES AND PERSONAL PROGRAMS INCLUDED IN MEMBERSHIPS!**

**Tri Fitness - Thelen Rd. Mountain, 715-276-9401**



**Real Estate**



Looking for Waterfront? Residential? Vacant Land?  
Call or E-mail us for a Complete List of Properties

**Century 21**  
Northwoods Team, Inc.

**Renee Irish**  
Broker/Owner  
Website: c21nwds.com

Cell (715) 216-1063  
Office (715) 478-3744  
Toll Free (877) 221-6937  
Fax (715) 478-5665  
Email: [Irish.renee@gmail.com](mailto:Irish.renee@gmail.com)

*Each Office is Independently Owned And Operated*

We are the only local Century 21 office serving Langlade and Forest Counties  
Also Serving Oneida and Oconto Counties

**DON'T MISS THIS**  
**White Lake Apartments**  
Near spring fed fishing lake and National Forest! Like new, 2-3 bedroom. Includes heat, water, air, microwave, appliances, full size washer/dryer in unit, security system. On site management. Call Sally (715)216-5147. Betc26

Your Northwoods Specialist in Listing and Selling  
• Residential (On or Off Water)  
• Lots/Acreage  
• Commercial Properties

**Integrity REALTORS LLC**

www.IntegrityRealtorsLLC.com  
Serving Forest & Surrounding Counties  
117 N Lake Avenue | Crandon, WI 54520  
rickdenton55@gmail.com

**Richard A. Denton**  
REALTOR\*

Crandon Office 715-902-0233  
Antigo Office 715-627-4181  
Cell 715-902-0509

**LOT PRICES REDUCED!**  
**PICKEREL, WI -- (3 LOTS)** -- All beautifully secluded Lakefront property located on Crane Lake (341 Acres) in Kasson Bay in Forest County, WI. Lots are adjoining and wooded. Can be sold separately or as one parcel. **LOT #2** -- 106 ft. of Lakefront. **LOT #3** -- 121 ft. of Lakefront. **LOT #4** -- 910 ft. of Lakefront with a 90 ft. point, 1,137 ft. of total Lake frontage! Crane Lake is connected by a channel to Pickerel Lake (1300 Acres). Swimming, fishing, boating, hunting, & 2 casinos within 20 miles. If a buyer should buy all 3 lots, we will give them our beautiful 12 x 68 mobile home 3 blocks away from the property. Call 262-862-2769 or 262-331-0752. Betc14

Jeff Radish, Broker/Owner  
Vicky Radish, Sales Associate

**RADISH Realty**

715-276-6027  
Cell: 715-850-0455  
Fax: 715-276-1108

17585 Red Maple Lane  
Townsend, WI 54175

www.radishrealty.com radishrealty@centurylink.net

**LANGLADE CO. WI**  
**Post Lake 1,136 acres (Upper & Lower)**  
all recreational water plus famous Wolf River. Homes - Cottages  
Vacant Lots - Cabins  
Call now to see!  
Fantastic Deals.  
Great Fishing.  
ATV, Snowmobile trails.  
Broker ph: 715-216-0838  
www.postlakerealestate.com

**WABENO** - Check out our 3 bedroom apartments at the Orchard Ridge Apartments. Rent is based on 30% of your gross adjusted income and includes water, sewer, garbage pickup, HEAT!! Major appliances, off street parking and laundry facilities. Call 800-938-5648 for an application or more information. *This institution is an equal opportunity provider and employer.* Betc32

**COTTAGE FOR RENT/SALE ON LAKE LUCERNE:** Weekly or monthly. 3 bdrm with lake shore! Call Dick at 913-5588-8931. os/etc 37

**FOR RENT IN CRANDON:** 1 bedroom main floor apartment, available immediately. Rent of \$350 per month, security deposit required. No pets. Contact Peg Houle at 715-478-2531. B38

**HOUSE FOR SALE OR VACATION RENTAL:** Daily/Weekly/Monthly Armstrong Creek area -1,800 sq. ft. ranch home, 1.5 baths, attached one-stall garage on 2 acres. Fully furnished, Sleeps 8. Call for details or viewing: 906-282-3965 or 906-221-0420. P41

**FOR RENT**  
Apartment for rent. Spacious, upper apartment with 2 bedrooms in Hotel Crandon. \$425 rent and security deposit. Call Mark at 715-889-0859 for appointment to view. Betc30

**Apartment for Rent**  
Efficiency apartment for rent \$250 per month plus security deposit. Apply at Hotel Crandon or call 715-889-0859.

**FOR SALE:** Beautiful building site for a cabin or home. 5 miles from Crandon in large hardwoods. Call 715-478-3566. If no answer, leave a message. Betc19

**ONE BEDROOM APARTMENT FOR RENT IN CRANDON:**  
Bright white, clean, quiet, small one bedroom ground floor apartment for rent at 108 W. Glen St. Suitable for single or senior. New paint and flooring, new appliances, private parking, laundry room, air conditioner, heat paid. No pets. References required. \$350 monthly rent plus \$350 deposit. Senior Citizen deposit discount. 715-478-7748 B40



**FOR SALE BY OWNER**  
Successful turn key bar, restaurant, and catering business on Highway 32 in downtown Wabeno, WI. Includes 3 bedroom living quarters with separate entrance, beautiful outside private beer garden & detached garage/storage. Can show 10 years of profit to qualified buyers. Shown by appointment only. \$189,900. Call 715-473-4314 or 715-850-0925 for an appointment.

**FIND PAST REAL ESTATE ONLINE AT**  
**WWW.PIONEEREXPRESSCRANDON.COM**



**Crandon Library News**

**Downton Abbey Premiere Party**

The Crandon Public Library will hold a special event for 'Downton Abbey' fans on Sunday, January 4th, 2015 at Lafetta's restaurant in downtown Crandon. Join your friends and the library staff at 7:30 p.m. for trivia and a brief overview of seasons 1-4. Season fives premiere episode will begin on the big screen 'live' at 8:00 p.m. and we will provide tea, coffee, hot chocolate and desserts to enjoy while we watch. Feel free to wear your glamorous 'upstairs' attire, or simply have fun with our photo-booth props. This event is free to the public with no registration required.

If interested in catching up on past seasons of 'Downton Abbey,' the Crandon Public Library has seasons 1 thru 4 available for check out.

**Expanding Your World @ the Crandon Public Library**

Too much information. Too little time. Most of us know the feeling.

Getting a simple answer to a simple question isn't always easy these days, let alone doing advanced research. Anyone who's done an online search—let's say for "car prices"—and gotten a message along the lines of "254,431 documents matched your query" knows what I'm talking about. What many of us don't realize is that help is as close as the Crandon Public Library. Libraries have come a long way since most of us were children. There are still books and magazines, of course, but there are also computers and Internet connections and learning opportunities for all ages. Best of all, there are skilled information professionals—the library staff—to help us find precisely what it is we need.

Librarians are at the forefront of the information age. They know how to find the best sources of information online and in print. And they have led the way both in making them available and teaching how to use them. In 2015, the Crandon Public Library will have a renewed focus on this idea of information literacy. Information literacy is a

critical life skill in today's information jungle. It means knowing when a book may be more helpful than a computer. It means knowing how to find, evaluate and use information from a variety of sources. It means knowing what questions to ask. Is the information complete? Accurate? Is someone trying to sell me something? Good decisions depend on good information. To succeed in the 21st century, our community must have citizens who can find, analyze and use information to find a job, start a business, raise a healthy family, plan for retirement and everything in between. The Crandon Public Library is a place for education and for self-help and it is here for everyone.

**Book Club to Meet**

The Crandon Public Library's Book Discussion group will meet on Thursday, January 8th at 2:00 p.m. to discuss the book titled *The Light Between the Oceans* by M.L. Stedman. The book is an engaging story about a lighthouse keeper and his wife living off the coast of Western Australia who after two miscarriages and one stillbirth, hear a baby's cries on the wind. A boat has washed up on shore carrying a dead man and a living baby. The couple decide to raise the baby as their own only to be reminded that there are other people in the world and that their choice has devastated one of them. Copies of the book are available at the Library's front desk. The book club is open to all members of the community with no registration required.

The Crandon Public Library is open six days a week: Monday, Tuesday and Friday 9 a.m. - 5 p.m., Wednesday and Thursday 9 a.m. - 7 p.m. and Saturday 9 a.m. - Noon. Please visit us online at [www.crandonpl.org](http://www.crandonpl.org).



**Still Smoking**  
207 N. Lake Ave.  
Crandon

**2015 Pricing**  
New Lower Prices on ALL E-Cigarettes and Juices  
650 mah Vaporizer kit was \$20, now \$15.  
1100 mah Evod Vaporizer kit was \$30, now \$25  
Go Smoke E-Juice was \$3.99, now \$3.49  
L-Smoke E-Juice 12ml was \$5.99, now \$4.99  
L-Smoke E-Juice 30 ml was \$15.00, now \$10.00

**Still Smoking**  
on Main Street  
Crandon, between Duck's and Pickers.  
(715) 478-4059  
Betc22

**PIONEER EXPRESS**

(715) 478-3640

We print envelopes, business cards, menus, brochures, raffle tickets, business carbonless forms (statements, invoices, etc.), wedding & graduation invitations & more. Services also provided print layout, laminating, color copies & more!



# Death Notices

**Gaylord M. Johnson**, 87, a longtime Wabeno resident who had been residing in Green Bay, passed away peacefully at his home he shared with his daughter and son-in-law Debra and Jim O'Connell. He was born on February 1, 1927 in Suring to John and Rosetta (Luebeck) Johnson.

Gaylord attended grade school and high school in Suring. After graduation in 1945 he entered into the United States Army. He served in Japan during WWII. Gaylord achieved the status of Staff Sergeant and was discharged honorably in 1947. He was a lifetime member of the American Legion Post 44 of Wabeno. He worked for the Wisconsin Public Service, starting in 1947 in the accounting department and retired as a meter man in 1989, after 42 years. Gaylord married his high school sweetheart Ruth Firsens on June 18, 1949, in Suring. She preceded him in death on July 6, 2013.

Gaylord was a member of St. John's Lutheran Church in Townsend, where he served as a trustee, and elder. He enjoyed raising his own plants and took pride of his garden. Gaylord loved to travel, camping, fishing, hunting, and watching college and professional football on tv.

Gaylord is survived by his daughter, Debra (Jim) O'Connell and their children Travis (special friend Jennifer Frank) and Tiffany Glasl, who enjoyed spending time with their grandpa. Further survived by his daughter Valerie Barbiaux and her children Tyler and Trent Barbiaux. Two brothers Allen (Marcia) Johnson and Gary (Caryl) Johnson, two sisters Joan Edgren and Betty (Steve) Vissors. Sister-in-laws; Ann Johnson, Susie (Gary) Mercil, Mildred Borneman, Phyllis Firsens, and Viola (Don) Laitinen. He is further survived by many nieces and nephews, and pets Mindi and Piker. He was preceded in death by his parents, wife, daughter Judy, sister Myrt Kytzman, and brothers; Orland, Vernon, Don, and Dieck.

Funeral service for Gaylord was held on Saturday, December 27 at 11:00 a.m. at St. John's Lutheran Church in Townsend. Rev. Stephen Mueller officiated. Visitation was from 9:00 a.m. until the time of service at the church. Burial was in Pleasant Hill Cemetery in Suring. Weber-Hill Funeral Home is assisting the family with arrangements. Online condolences may be left for the family at [www.weberhillfuneralhome.com](http://www.weberhillfuneralhome.com).

A memorial fund has been established in Gaylord's name for St. John's Lutheran Church.

Gaylord's family would like to send a special thank you to longtime friend Cliff Engels for his frequent visits, his Wabeno friends and neighbors, Pastor Mueller and St. John's Lutheran church members for their long time support and prayers, and Pastor Amy Engebos of Bethel Lutheran in Green Bay for her comfort to the family.

**William R. Boness**, 65, of Crandon, passed away on December 26, 2014 under the care of the Crandon Nursing Home and his sister. No formal services will be held. Weber-Hill Funeral Home is assisting the family with arrangements.

**Todd B. Talmont**, 52, of DePere, died Monday December 15, 2014, at St. Mary's Hospital in Green Bay. He was born November 5, 1962, in Milwaukee, to Harry and Irene (Pasternak) Talmont.

Todd Loved the Packers and was an avid NASCAR fan. He was a machinist and worked at Metal Cut in Milwaukee for 18 years.

Todd is survived by his mother Irene of Blackwell, one brother Dwayne (Sharon) Pasternak of Oak Creek, aunt Mary (Jerry) Henry of Sabastian, FL, uncle John (Nancy) Pasternak of Iron River, MI. He is further survived by cousins: Dave Kobylarz of Armstrong Creek, James Kobylarz of Armstrong Creek, Bonnie (David) Edlebeck of Niagra, Susan (Tim) Kuklinski of Armstrong Creek, John Henry of West Palm Beach, FL, and Nancy (Mark) Garrelts of Armstrong Creek. Todd was preceded in death by his father, grandparents, Aunt Dorothy, and Uncle Kasmer Kobylars.

No formal service will be held for Todd. Weber-Hill Funeral Home is assisting the family with arrangements.

# Letters to the Editor

*We welcome letter to the Editor; however the letters should be legible, in good taste, not libelous and pertinent to current issues. Names will not be withheld upon request, except for very special circumstances. NAME AND PHONE NUMBER SHOULD BE INCLUDED FOR VERIFICATION PURPOSES. We reserve the right to reject any and all letters.*

# For Old Time's Sake

Back in the late 1930's, the Catholic church in Crandon burned, and the photos below are of the aftermath. The church was rebuilt, and is still in use today. Frosty Zink did the rebuilding, and a sad time was made well again.



Reach over 8,500 (summer circulation) homes in the Forest and Northern Oconto county area with a classified ad through our mailings and set outs.

**RATES ARE PER WEEK**

**Personal Classified \$3.00 With border \$3.50**  
**Business Classified \$4.00 With border \$4.50**  
**UP TO 30 WORDS ONLY.**  
 Additional words, add 10¢ per word.

To display your ad, fill out form and send form and check to:

**PIONEER EXPRESS**  
**P.O. BOX 333**

**CRANDON, WI 54520**

**(715) 478-3640 OR 1-800-234-2152 FAX (715) 478-3540**

**AD DEADLINE 4 P.M. TUESDAY**

Amount of weeks to run \_\_\_\_\_

Name \_\_\_\_\_

Address \_\_\_\_\_

Phone \_\_\_\_\_

Ad \_\_\_\_\_

\_\_\_\_\_

\_\_\_\_\_

\_\_\_\_\_

# PIONEER EXPRESS

*Published Weekly*

125 N. Lake Ave., P.O. Box 333

Crandon, WI 54520

email: [pionexp@newnorth.net](mailto:pionexp@newnorth.net)

Mike & Linda Monte.....Publishers/Editors  
 Monica Stamper.....Computer Graphics/Job Printing  
 Boyd Monte.....Ad Sales/Job Printer/Graphics  
 Melissa Monte.....Accts. Rec./ Post Press/ Graphics  
 Stephanie Rosio.....Proofreader  
 Allison Seils.....Graphic work, Output Work

**WEBER-HILL**   
**FUNERAL HOME AND CREMATION SERVICES**  
*Family Owned & Operated*  
**Gregory L. Weber • Susan I. Hill**  
**Anthony J. Weber • James Evans**  
 302 S. Lake Ave. Crandon • 1768 Oconto Ave., Wabeno  
 (715) 478-2322 • (715) 473-3131  
[www.weberhillfuneralhome.com](http://www.weberhillfuneralhome.com)

**FOREST GRANITE WORKS**  
**MONUMENTS • MARKERS • COUNTERTOPS**  
*Personalized & Professional Service*  
*Specializing in Hand Carved & Computer Designs*

**EST. 1979**  **"Cherish a Life for a Lifetime"**

**2ND GENERATION**

E. Glinski & Sons  
 Owners / Operators  
[www.forestgraniteworks.com](http://www.forestgraniteworks.com)

Crandon, WI  
**715-478-3958**



# Specialty Shops



**60% OFF\***  
**Christmas**  
**Merchandise**  
**20% Store-wide**  
Starts Friday, January 2, 2015  
**Tricia's Treasures**  
Downtown Crandon  
(715) 478-1160  
\*Some Exclusions Apply. Sale not good on previously purchased merchandise or markdown merchandise.  
Discount cannot be combined with any other sale or promotion.



Formal Wear Rentals  
Wedding Invitations  
available at  
**FLOWERS FROM THE HEART**  
117 N. Lake Ave., Crandon Phone 478-3710



**Sears**  
Authorized Retail Dealer Store

<p><b>Sears of Antigo</b> 445 Hwy 64 • Antigo By Kwik Trip <b>(715) 627-4407</b> Hours: Mon-Fri. 9-7, Sat. 9-6 &amp; Sun. 11-4</p>	<p><b>Sears of Rhinelander</b> 908 Lincoln St. • Rhinelander By Dairy Queen <b>(715) 365-7800</b> Hours: Mon-Fri. 9-7, Sat. 9-6 &amp; Sun. 11-4</p>
--	---

## Thank You & Personals

Hope we have served you well  
and we thank you for  
your business!



**NEVAEH SALON & Sinnerman Tattoo**

**Locally roasted & fresh coffee. Experience a great coffee taste!**



Call Dave at  
**715-649-3414**

**the Perfect Gift** & Flowers from the Heart Wabeno  
by Darlene

- Fresh Floral Arrangements
- Balloons & Cards
- Homemade Fudge
- Wines, Cheeses & Honeys
- Gift Baskets
- Tuxedo Rentals
- Scarves, Jewelry & Purses
- Primitive Decor
- Many More Gift Items

HOURS: Wed. - Fri. 10 to 4:30, Sat. 10 to 2  
**715-473-5400**  
Main Street, Wabeno

**Gold Miner Jewelers**  
**On The Spot Jewelry Repair!**  
Can add metal with the cutting edge technology of a Laser!  
Prong Re-tipping, Ring Sizing, Chain Repairs & More!  
Stop In Today!  
Buying gold, silver, coins and scrap.  
2737 N. Hwy 45,  
Next to Arlen's Antigo, WI  
or call 715-627-4747.

**STERN ELECTRONICS**  
**SPECIALIZING IN:**  
• LG Sales & Service  
• Antenna Installations & Repair  
• Now Selling Used TVs,  
• Dish Network Installations & Repair  
**VERY REASONABLE RATES!**  
Call  
**STERN ELECTRONICS**  
**715-623-2441**  
Betc10



**TOPIC OF THE MONTH**  
**"Pick a Better... Daily Meal Plan"**  
**MEAL SCHEDULE**

**CRANDON, WABENO, LAONA**  
**Monday - January 5** - Pork chop, parsley potatoes, broccoli, dinner roll, ice cream  
**Monday - January 12** - Chicken Dijon, roasted red potatoes, herbed carrots, dinner roll, jello  
**CRANDON, WABENO, LAONA**  
**Tuesday - January 6** - Turkey tetrazzini, egg noodles, tossed salad, fruit, wheat bread, carrot cake  
**Tuesday - January 13** - Pork boiled dinner with potatoes, carrots, rutabaga and cabbage, oat bread, Oh Henry bar  
**CRANDON**  
**Wednesday - January 7** - Beef stew with potatoes, carrots, onions and celery, fruit, biscuits, brownie  
**Wednesday - January 14** - Egg salad sandwich on whole wheat, potato soup, cucumber salad, peach cobbler  
**LAONA, WABENO CONGREGATE**  
**Thursday - January 8** - Beef stew with potatoes, carrots, onions and celery, fruit, biscuits, brownie  
**Thursday - January 15** - Egg salad sandwich on whole wheat, potato soup, cucumber salad, peach cobbler  
**ARMSTRONG CREEK**  
**Tuesday - January 6** - Turkey tetrazzini, egg noodles, tossed salad, fruit, wheat bread, carrots cake - **BINGO** -  
**Tuesday - January 13** - Pork boiled dinner with potatoes, carrots, rutabaga and cabbage, oat bread, Oh Henry bar - **MUSIC - ALVIN**  
**Thursday - January 8** - Spaghetti and meatballs, noodles, salad, peaches, garlic bread, cookies  
**Thursday - January 15** - Sauerkraut and ribs, mashed potatoes, pears, rolls, bars  
**WABENO HOME DELIVERED MENU**  
**MONDAY, TUESDAY same as CRANDON**  
**THURSDAY same as LAONA**  
Please register with Commission on Aging - 715-478-3256  
Crandon site manager Pat Raml is at 715-478-0742 (home) or 715-478-3040 (site). Serving at 12:00 p.m. On Monday, Tuesday and Wednesday.  
Alvin site manager Florence Kostka at 715-545-4063 (home) or 715-545-3323 (site). Meal served at 4:30 p.m. on Thursday.  
Laona site manager Peggy Alderton at 715-889-3116 (cell). Meal served at 12:00 p.m. Monday, Tuesday and Thursday.  
Wabeno site manager Diana Reed at 715-850-0626 (home) or 715-473-4333 (site). Meal served at 11:30 a.m. on Monday and Tuesday. Home delivered on Monday, Tuesday and Thursday.  
Armstrong Creek site manager Jill Criel at 715-336-3178 (home) or 715-336-2218 (site). Meal served at 11:30 a.m. on Tuesday.



Joyce Hoenig was reunited with the love of her life Ramon "Slink" Hoenig on December 17, 2014, in Heaven.

Thank you. Words can not express our deep appreciation for all the love and kindness we received in our time of loss. A special thanks to our family and friends, Weber-Hill, Flowers From The Heart, Praise Chapel, Pastor Farr, Church of God, Pastor Edward Leiskau, AGI Nursing Home, Bill Pitts and to each individual that helped with food, cards, flowers, phone calls, thoughts and prayers.  
The Family of Joyce Hoenig



## Senior Chatter

Submitted by Kate Schultz

### Ice issues

Winter comes with ice in many parts of the country. Whether you are in the city or country, you could be walking on thin ice when it comes to safety unless you follow this advice:

- **Wear** footwear with nonslip rubber or neoprene grooved soles.
- **Learn** how to walk on ice if there's no way around it. Lean slightly forward and bend your knees; take short, shuffling steps to increase traction and move slowly. If possible, use stationary objects such as a vehicle or a wall for support as you walk, or put hands out to the sides for balance.
- **Drive** slowly even if the roads seem clear. There could be black ice -- an extra-thin, nearly invisible layer of ice that usually forms in shaded areas. Take extra care on bridges and overpasses.
- **Give** yourself more room to stop if driving in winter conditions.
- **Brake** gently, and accelerate and decelerate slowly to avoid skids.
- **Don't** use cruise control or overdrive on icy roads.

#### Phone Number Notice

The ADRC local number of 478-2162 is no longer a direct link to our building. You can call it and leave a message and will be told the 1-800-669-6704 toll free number.

If you want to get me directly, I can be reached at 715-362-8277.

Sorry for any inconvenience. - Kate

#### Forest County Commission on Aging DOT Bus Schedule

**Monday - January 5** - Alvin and Nelma to Rhinelander (Argonne and Crandon standby) - **Bus driver - Hal Weisnicht**  
**Tuesday - January 6** - Carter, Wabeno and Laona to Rhinelander (Crandon standby) - **Dan Pedersen**  
**Wednesday - January 7** - Armstrong Creek, Cavour, Crandon, Laona, Newald and Popple River to Iron Mountain - **Bus driver - Hal Weisnicht**  
**Thursday - January 8** - Hiles, Argonne and Crandon to Rhinelander - **Bus driver - Dan Pedersen**  
**Hal Weisnicht: 715-478-2961**  
**Dan Pedersen: 715-478-4254**





SCHAEFER'S MEAT DEPT. SELLS USDA ANGUS CHOICE BEEF & USDA INSPECTED PORK

**MEAT**

THESE AD PAGES NOW ON-LINE AT [pioneerexpresscrandon.com](http://pioneerexpresscrandon.com)

**PRODUCE**

Harvest Club  
**NAVEL ORANGES**

**2/\$5.00**



Crisp  
**GREEN CABBAGE**

**49¢** Lb.



Fresh  
**YELLOW ONIONS**

3 Lb. Bag

**\$1.49**



Green Giant  
**IDAHO RUSSET POTATOES**

10 Lb. Bag

**\$2.49**



Juicy  
**VINE TOMATOES**

**\$1.99** Lb.



White  
**WHOLE MUSHROOMS**

**2/\$3.00**



Michigan  
**MCINTOSH APPLES**

3 Lb. Bag

**2/\$5.00**



Mann's  
**SUGAR SNAP PEAS**

8 Oz. Bag

**2/\$4.00**



Minneola  
**TANGELOS**

**99¢** Lb.



Crunchy  
**RADISHES**

1 Lb. Bag

**\$1.49**



Icy Fresh  
**GREEN ONIONS**

1 Bunch

**49¢** Ea.



Dole  
**CLASSIC SALAD MIX**

12 Oz. Bag

**99¢**



Schaefer's **IGA** **HOMETOWN PROUD**  
Since 1935

Come visit us on the web at [Schaefer's.iga.com](http://Schaefer's.iga.com)  
Pioneer Plaza  
Highway 8 E., Crandon

HOURS: Mon. - Sat. 7AM - 8PM  
Sun. 7AM - 7PM

478-2558 FAX 478-2545

We reserve the right to correct any printing errors in the ad  
We reserve the right to limit quantities

Prices Effective Mon. JAN. 05, 2015

SUN	MON	TUE	WED	THU	FRI	SAT
	5	6	7	8	9	10
11						

Premium Angus Choice Boneless Beef  
**SIRLOIN TIP ROAST**

**\$4.59** Lb.



Premium Angus Choice Boneless Beef  
**SIRLOIN TIP STEAKS**

**\$4.99** Lb.



Premium Angus Choice  
**FRESH GROUND ROUND**

**\$4.59** Lb.



Premium Angus Choice  
**RIB EYE STEAKS**

**\$9.99** Lb.



Hormel Natural Choice  
**PORK STEAKS**



**\$2.29** Lb.

Hormel Natural Choice  
**PORK BUTTS**



**\$1.99** Lb.

Gold 'N Plump Family Pack  
**LEG QUARTERS**

72 Oz.



**\$4.49**

Farmland  
**HAM STEAKS**

16 Oz.



**\$3.99**

Bar-S  
**CORN DOGS**

3 Lb. Box



**\$4.99**

Jimmy Dean Meal Size  
**BREAKFAST SANDWICHES**

13.6 - 18.4 Oz.



**\$4.99**

John Morrell Off the Bone  
**CARVED HAM OR TURKEY**

7 Oz.



**\$2.79**

Oscar Mayer  
**TURKEY BOLOGNA OR COTTO SALAMI**

16 Oz.



**\$1.69**

Hormel Natural Choice  
**DELI MEATS**

8 Oz.



**\$3.29**

SCHAEFER'S FOOD MART PULL-OUT SECTION

SCHAEFER'S FOOD MART PULL-OUT SECTION

SCHAEFER'S FOOD MART PULL-OUT SECTION

SCHAEFER'S FOOD MART PULL-OUT SECTION

SCHAEFER'S FOOD MART PULL-OUT SECTION

SCHAEFER'S FOOD MART PULL-OUT SECTION



SCHAEFER'S FOOD MART PULL-OUT SECTION

# Shurfine CHILI OR DARK RED KIDNEY BEANS

15 Oz.

## 2/\$1.00



# Shurfine Select PASTA

16 Oz.  
4 Kinds

## 79¢



# TJ Farms SALAD DRESSING

16 Oz.  
4 Kinds

## \$1.49



# Kraft MAC & CHEESE DELUXE

14 Oz. OR

# VELVEETA & SHELLS

12 Oz.

## \$2.59



SCHAEFER'S FOOD MART PULL-OUT SECTION

# Hunts ORIGINAL MANWICH

15 Oz.

## \$1.00



# Shurfine POTATO CHIPS

4 Oz.  
4 Kinds

## 69¢



# Shurfine MUSHROOMS

4 Oz.

## 69¢



# IGA MAC & CHEESE

7.25 Oz.

## 2/\$1.00



# IGA TOMATO OR CHICKEN NOODLE SOUP

10.5 Oz.

## 69¢



# Select Betty Crocker POUCH MIX

5 Kinds  
6.5 to 6.75 Oz.



## 99¢

# Shurfine Select SALTINES

16 Oz.

## \$1.49



# IGA PAPER TOWEL

8 Roll

## \$5.99



SCHAEFER'S FOOD MART PULL-OUT SECTION

SCHAEFER'S FOOD MART PULL-OUT SECTION

PLU 942

\*Limit 1 Coupon Per Customer

Retailer for redemption send before 2/13/15 To: Affiliated Foods Midwest, P.O. Box 1067 Norfolk, NE 68702-1067 Attn: Affiliated Coupon Redemption Dept

GOOD ONLY AT PARTICIPATING AFFILIATED FOODS STORES THRU 1/13/15

IN-STORE COUPON



(WITHOUT COUPON 2/\$6.00)

RV0132

Fritos, Cheetos or Funyuns

Selected 6-9.75 Oz.

## 3/\$6

MUST PURCHASE 3

# IGA BATH TISSUE

12 Roll Double Roll

## \$5.99



# Malt-O-Meal Select BAG CEREAL

10-12 Oz. Limit 1

## 50¢



50¢ with a separate \$10 Purchase

SCHAEFER'S FOOD MART PULL-OUT SECTION

# COKE BRAND

12 Oz./12 Pack Cans or 12 Oz./8 Pack Bottles

## \$4.49



# NOS OR 6 Pack DASANI WATER OR 24 Pack FULL THROTTLE

6 Pack

## 2/\$9.00



# PEPSI BRAND

12 Oz. Cans/12 Pack or 12 Oz. Bottles/8 Pack

## 3/\$12.00



# LIPTON OR LIPTON PURE LEAF

.5 Liter/12 Pack

18.5 Oz./6 Pack Bottles

## \$4.99



# PEACE TEA OR FRUIT WATER

23 Oz.

## 99¢



# COKE BRAND OR COKE DE MEX

1.25 Liter 12 Oz. Glass

## 99¢



# TOSTITOS OR KETTLE LAYS

Reg. \$4.29 OR Reg. \$3.49

## 2/\$5.00



# PEPSI BRAND

24 Oz./6 Pack Bottles

## 3/\$8.88



SCHAEFER'S FOOD MART PULL-OUT SECTION



THESE AD PAGES NOW ON-LINE AT  
pioneerexpresscrandon.com

**Computerized  
PICTURE CAKES**  
at Schaefer's  
Bakery



Bring in any  
photograph, picture, or drawing  
and we will put it on your next party cake

All cake orders **MUST** be placed with a 24 hour notice!  
All weekend orders must be placed by 10:00 am Thursday!

**BAKERY**

BIRTHDAY  
ANNIVERSARY  
TEAM PARTY  
HOLIDAYS  
FAVORITE PETS  
RETIREMENT  
GRADUATION  
DRAWING  
PHOTOGRAPH

**ORANGE  
DREAM PICNIC  
CAKE**



**\$4.29**

**CAKE DONUTS**

Assorted  
12 Ct.



**\$4.59**

**OATMEAL  
RAISIN  
COOKIES**



12Ct.  
**\$3.59**

**FILLED  
CROISSANTS**

Assorted  
2 Ct.



**\$1.69**

**SALSA & CHEESE  
BREAD**

1 Lb. Loaf



**\$3.19**

**CRUSTY  
WHITE  
BREAD**

1 Lb. Loaf



**\$2.69**

**Lean Cuisine  
ENTREES**

Assorted Varieties



**6/\$10.00**

**FROZEN**

**Shurfine  
FROZEN VEGETABLES**

16 Oz. Bags  
French Style Beans, Beans, Peas, Corn,  
Carrots, Broccoli Cuts, Country, Mixed  
and Peas/Carrots



**99¢**

**Fresh Frozen  
ONION RINGS**

20 Oz. Bag



**\$2.69**

**St. Ives  
BODY WASH**

13.5 FL. Oz.  
Nourishing Vanilla,  
Oatmeal & Shea Butter  
and Even & Bright  
Reg. \$2.99



**\$2.49**

**HEALTH &  
BEAUTY**

**Genuine Phillips  
MILK OF  
MAGNESIA**

12 FL. Oz.  
Original, Fresh Mint  
or Wild Cherry  
Reg. \$5.59



**\$4.99**

**Appearance  
BUBBLE BATH**

32 FL. Oz.  
Peaches & Cream,  
Milk, Aloe Vera and  
Vanilla  
Reg. \$2.49



**\$1.99**

Jennie-O

**TURKEY BREAST**

Shaved or Sliced



**\$4.99** Lb.



**DELI**

**MENU**

**Monday:** Lasagna, Baked Chicken Dinner  
**Tuesday:** B.B.Q. Rib Dinner  
**Wednesday:** Home Made Pot Pies  
**Thursday:** Chicken Fried Steak with Country Gravy, Corn and Roll  
**Friday:** Battered Cod or Pollock Fish Dinner, Shrimp Basket, Chicken Fillet. Fish Buckets available. Please call ahead.

Soup & Salads Fresh Daily

24 Hour Notice On Party/Deli Tray Orders Please

**Imperial  
MARGARINE**

16 Oz. Quarters



**85¢**

**DAIRY**

**Nostimo  
GREEK YOGURT**

Assorted 5 Oz.



**95¢**

**Simply  
HASHBROWN  
POTATOES**

Assorted 20 Oz.



**\$1.99**

**International Delight  
CREAMERS**

Assorted 32 Oz.



**\$3.25**

**David's  
BAGELS**

Assorted 5 Ct.



**\$1.39**

**Sparkle  
FLAT SCREEN  
CLEANER SPRAY**

8 Oz.



**\$4.99**

**All Season  
WINDSHIELD  
WASH**

Gallon



**\$2.47**

**GENERAL  
MERCHANDISE**

**Goof Off, Heavy Duty  
SPOT REMOVER  
& DEGREASER**

16 Oz. Spray



**\$4.77**

SCHAEFER'S FOOD MART PULL-OUT SECTION

SCHAEFER'S FOOD MART PULL-OUT SECTION

SCHAEFER'S FOOD MART PULL-OUT SECTION

SCHAEFER'S FOOD MART PULL-OUT SECTION

SCHAEFER'S FOOD MART PULL-OUT SECTION

SCHAEFER'S FOOD MART PULL-OUT SECTION



SCHAEFER'S IGA PULL - OUT SECTION

SCHAEFER'S FOOD IGA - OUT SECTION

SCHAEFER'S FOOD IGA - OUT SECTION

SCHAEFER'S IGA PULL-OUT SECTION

SCHAEFER'S IGA PULL-OUT SECTION

SCHAEFER'S IGA PULL-OUT SECTION

SCHAEFER'S IGA PULL - OUT SECTION

SCHAEFER'S IGA PULL - OUT SECTION

SCHAEFER'S IGA PULL - OUT SECTION



# FOOD **2** FUEL

## Schaefer's

Since 1935



### HOMETOWN PROUD

Good 01/05/15 - 02/01/15

### COKE BRAND

20 Pk/12 Oz. Cans



FOOD **2** FUEL  
5¢ off /gal

**\$6.99**

### TreSemme HAIR SPRAY

11 Oz. Extra Hold or Ultra Fine Mist



FOOD **2** FUEL  
5¢ off /gal

**\$5.53**

### GOLD PEAK TEA

6 Pk/16.9 Oz.



FOOD **2** FUEL  
5¢ off /gal

**\$4.99**

### 21st Century Maximum Strength FISH OIL

90 Ct. Softgels



FOOD **2** FUEL  
5¢ off /gal

**\$6.63**

### POWERADE

20 Oz./8 Pack



FOOD **2** FUEL  
5¢ off /gal

**\$4.99**

### Bayer Extra Strength BACK & BODY

50 Coated Caplets



FOOD **2** FUEL  
10¢ off /gal

**\$6.79**

### Swanson CHICKEN BROTH

14 Oz.



FOOD **2** FUEL  
3¢ off /gal

**99¢**

### Vicks VAPO RUB

Ointment 3.53 Oz.



FOOD **2** FUEL  
10¢ off /gal

**\$9.45**

### ROCKSTAR

16 Oz.



FOOD **2** FUEL  
2¢ off /gal

**\$1.49**

### Shurfine Select TOMATOES

14.5 Oz. - 5 Best Sellers



FOOD **2** FUEL  
5¢ off /gal

**99¢**

### ENERGIZER BATTERIES

10 Pk AA or AAA



FOOD **2** FUEL  
10¢ off /gal

**\$7.69**

### IGA SUGAR

4 Lb.



FOOD **2** FUEL  
5¢ off /gal

**\$1.99**

### Domestix Double Roll BATH TISSUES

12 Roll



FOOD **2** FUEL  
10¢ off /gal

**\$5.99**

### Connie's NATURAL PIZZA

**2/\$11.00**



FOOD **2** FUEL  
5¢ off /gal

### Greenlite CFL LIGHT

13 Wt. Soft White



FOOD **2** FUEL  
5¢ off /gal

**50¢**



## Bows & Guns

**Will buy Reloading equipment & supplies for rifle or shotgun**

**Will also buy antique guns- Shotguns, Rifles or Pistols**

**Give me a call, we might make a deal!  
715-478-3660 or 715-889-0811**

**WE BUY GUNS!**  
We also sell & trade them. Stop in to see Jamie at CONWAY TRUE VALUE, Pioneer Plaza, Crandon or call 715-478-3617



## Eco-Docks

Floating Docks and Drive On Docks

20 Year Warranty Maintenance Free,

715-850-0198  
www.Eco-Docks.com  
www.Candock.com

## Recreational

### ADAM'S MOBILE MARINE SERVICE LLC

PICKEREL, WI 715-219-1152

**TIME TO GET YOUR SNOWMOBILE READY FOR THE TRAILS!!**

**Servicing all makes and models of snowmobile, ATV's and all other small engines!**

**FOR SALE**  
• 2006 Polaris Classic  
• 2006 MXZ Ski-Doo  
• 97 Ski-Doo Touring 2 Up

**20% OFF PARTS FOR VETS**  
Fully Insured

**Service at your location! No need to load or unload your equipment. We are just a phone call away!!**

**Paying Top Dollar for guns, gold, coins, tools, sporting goods & more!**

**Check with us before selling**

### Hodag Gun & Loan LLC

2261 Lincoln St. • Rhinelander, WI  
Phone: (715) 369-4884

## A-D Design & Manufacturing

### Complete Pontoon Boat Restoration

Deck • Carpet • Bimini Top • Mooring Cover  
New Updated Furniture  
Vinyl Re-Upholstery

**Auto - Home - RV Marine Upholstery**



**(715)473-3554 • Wabeno, WI**

## Move Over Law

Drivers must provide a safety zone for stopped law enforcement and other emergency vehicles

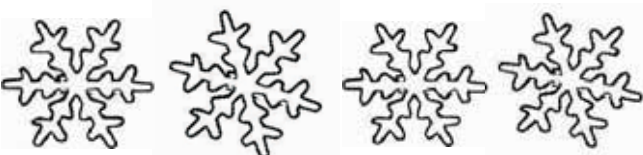
"Tow truck operator killed while working on the Interstate." "Trooper's cruiser hit by out-of-control vehicle." The Wisconsin State Patrol wants to put an end to tragic headlines like these.

"Drivers have a legal and moral responsibility to help protect those who must work on the side of busy roads while fast-moving vehicles pass by just a few feet away," says Wisconsin State Patrol Captain Nicholas R. Wanink, North Central Region - Wausau Post.

"To prevent needless deaths and injuries, drivers must comply with Wisconsin's Move Over Law, which provides a safety zone for workers on the side of roadways," Captain Wanink explains. "By law, drivers are required to shift lanes if possible or at least slow down when encountering a law enforcement vehicle, ambulance, fire truck, tow truck, highway maintenance vehicle or utility vehicle that is stopped on the side of a road with its warning lights flashing. On Interstate highways and other divided roads with multiple directional lanes, you must move over to vacate the lane closest to the law enforcement or other emergency vehicle if you can safely switch lanes. If the road has a single directional lane or you can't safely move over because of traffic, you must reduce your speed until safely past the vehicle."

A citation for a Move Over Law violation costs \$263.50 with three demerit points added to your driver's license. But the greatest danger of a violation is not an expensive fine. A recent dash cam video from a State Patrol cruiser shows a Move Over Law violation that came shockingly close to seriously injuring a trooper during a traffic stop. The video is available online on the Wisconsin Department of Transportation's YouTube channel (<https://www.youtube.com/watch?v=egkuuPkXUPg&feature=c4-overview-vl&list=PL4DA6884A140EBFC8>).

"During winter months, law enforcement officers, tow truck operators and others frequently must respond to crashes and assist motorists whose vehicles have slid off icy roads. Officers and other workers are in danger of being hit while inside or outside their vehicles by out-of-control or speeding vehicles that did not move over," Captain Wanink says. "By obeying the Move Over Law, drivers can protect themselves, their passengers, our officers and others who work on highways from serious injuries and deaths."



**WE HAVE THE KEY TO YOUR BUSINESS'S SUCCESS**



**CALL THE PIONEER EXPRESS AT 715-478-3640 OR 1-800-234-2152**

### Still Smoking

207 N. Lake Ave.  
Crandon

### 2015 Pricing

New Lower Prices on ALL E-Cigarettes and Juices  
650 mah Vaporizer kit was \$20, now \$15.

1100 mah Evod Vaporizer kit was \$30, now \$25  
Go Smoke E-Juice was \$3.99, now \$3.49  
L-Smoke E-Juice 12ml was \$5.99, now \$4.99  
L-Smoke E-Juice 30 ml was \$15.00, now \$10.00

### Still Smoking

on Main Street  
Crandon, between Duck's and Pickers.  
(715) 478-4059  
Betc22

## EZ Dock

8227 Cty DD - Pickerel • 715-484-2277  
Call for an Appointment or Free Brochure

**The Last Boat Dock You'll Ever Need!**  
Floating Dock System • Boat & Dock Lifts  
Drive on Personal Water Crafts



www.motorsportsmarine.com

Sales & Service - New & Used Financing available

FULL SERVICE CENTER • CERTIFIED TECHNICIANS

Mon. Closed until April 15; Tues.-Thurs. 9-5;

Fri. 9-7; Sat. 9-3; Sun 11-3pm

Closed New Year's Day.

**Have a Safe & Happy New Year!!**

Authorized Dealer of Mercury & Evinrude Outboards, MirroCraft Boats, Palm Beach & Montego Bay (Made in Wisconsin) Pontoons & Sea-Legs

1986 Yamaha 540 SRV

1990 Artic Cat 500 Cougar

1993 Polaris 488 Indy Trail

**PLUS MANY USED ATVs FOR SALE WE SERVICE ALL MAKES & MODELS OF ATVs & SNOWMOBILES.**

N10306 St. Hwy 55, Pearson, WI • (715) 484-2106

## SNOWMOBILERS!!!

**PARTS AND SERVICE.**

**WE SPECIALIZE IN ARCTIC CAT**

Belts, carbides, spark plugs, hyfax, batteries, bulk oils and light bulbs for most makes of snowmobiles.

**KOCHENDERFER SPORTING GOODS**

**(715) 674-2403 or (715) 889-1717**

5280 East Silver Lake Rd. • Laona, WI

## ANTIGO EYE CARE CENTER



**Dr. Becker, Optometrist**

Hours: Mon., Tues., Thurs. & Fri. 8 a.m.-5 p.m.

**810 5th Ave., Antigo • 715-623-3620**



**FOREST COUNTY TRAILS ARE OPEN!!**

## WE ARE YOUR ONE STOP SHOP FOR:

- ADVERTISING • CLASSIFIEDS THAT WORK
  - DIGITAL COLOR COPIES • BUSINESS CARDS
  - ENVELOPES • INVOICES • BROCHURES
  - FLIERS - We can Design, Print & Insert - All In House
- GIVE US A CALL FOR ALL YOUR PRINTING NEEDS**

Pioneer Express • 715-478-3640



# SAMZ CONCRETE

All Types of Concrete Flat Work, Stamped & Colored  
Concrete Poured Concrete Foundations, Solid Poured Walls  
FULLY INSURED • FREE ESTIMATES

**Matt Samz**  
8938 Balsam Lane, Argonne, WI  
**715-902-0296**  
**715-649-3933**



## \$28 Oil Change While You Wait

**WE NOW DO TOWING & RECOVERY!**

305 E. Pioneer St. Crandon, WI 54520 **715-784-6046**  
EliteCrandon@aol.com

# THE GLASS COMPANY

GIVE US A BREAK

Commercial\*Residential\*Auto Glass

1045 South Superior Street\* Antigo, WI 54409  
715-623-3751 \* Fax 715-627-4896  
Toll Free 1-866-334-7673

# Universal Automotive & Welding

Auto/ Marine • Small Engine • Heavy Equip

Heavy Duty Equipment, Diesel, Light Truck & Domestic Repair and Maintenance  
We Winterizing All Watercraft & RV's  
24 HOUR EMERGENCY SERVICE

**Rick or Tina Pease**  
**(715)889-2323** 207 Railway Ln.  
**(715)478-2741** Crandon, WI 54520  
- At the Corner of Railway Ln. & Hwy 8 -  
Mon. - Fri • 8 am - 5 pm •

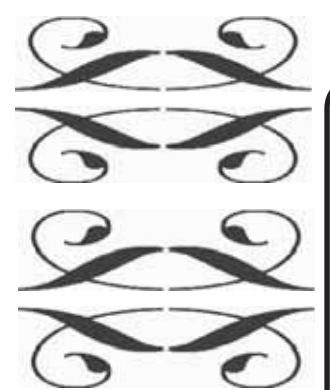
## Snow Plowing Snow Blowing Roof Shoveling

Accepting New Clients  
Call for a FREE QUOTE

### Total Property Care

**715-276-2766**  
See us at  
totalpropertycarewi.com  
P37/Betc

**MARK BROCKWAY BUILDER**  
Kitchen & Bath Remodeling Additions  
Basement Finishing Windows & Doors Siding  
Hardwood & Laminate Floors  
Garages Decks  
Design Service Available  
**Over 30 Years Experience**  
Licensed & Insured  
**715-478-2693**  
10% Labor Discount for Seniors  
Betc13



## GEITER SEPTIC PUMPING, INC.

Sanitary Lic. # 18  
IN BUSINESS OVER 50 YEARS  
SEPTIC TANKS  
HOLDING TANKS  
**(715)473-3901**  
WABENO

## Services

# RUCON CONSTRUCTION MANAGEMENT

**25 Years of Building Expertise!**

New Construction • Additions • Remodeling  
Roofing • Storm Repair • Consulting

(715)484-3606 - Pickerel / (920)858-2875 - Rick Cell  
(920)759-0400 - Fox Valley

Member VHBA • Licensed & Insured  
www.ruconhomes.com

# Seils Auto Body

9375 Seils Lane Argonne, WI 54511  
**(715)478-3482**

- Free Estimates
- Insurance Claims
- Custom Paint & Body
- Auto Collision Repair

Ron Seils

Fully Insured



## MIKE DREHER CONSTRUCTION LLC

New Homes • Garages  
Decks • Siding • Remodeling

5101 State Hwy. 52, Wabeno, WI 54566  
**Phone: 715-850-0403**

Charles JACKSON (715) 484-2911  
PICKEREL, WI

- Driveways - Lot Clearing • Bulldozing • Materials

**We Fix Storm Windows & Screens and make Storm Windows & Screens**

Conway True Value  
Hwy 8 East Pioneer Plaza, Crandon 478-3617  
START RIGHT, START HERE™



## Four Seasons SELF STORAGE

715-674-5005

LOCATED BETWEEN LAONA & CRANDON ON HWY 8

**A Variety of Different Size Units Monthly, 6 Month or Yearly Rates Call for Pricing**

Today's **TIPTOP**™

Our Customers Are Our Best References!

- Tree & Shrub Trimming and Removal
- Lot & Driveway Clearing
- Emergency Storm Damage
- Portable Stump Grinder

Tree Service  
• Free prompt estimates  
• Services within 150 - miles  
• Fully Insured

VISIT OUR WEBSITE! www.toddstiptop.com  
**715-282-5858 • 800-816-5619 Rhinelander, WI**



New Homes • Additions  
Remodeling • Roofs • Garages  
Decks • Windows & Doors  
Wood Flooring / Paneling

Crandon, WI **715.902.0260**  
Josh Pieper, Contractor

**FULLY INSURED • LICENSED • FREE ESTIMATES**

## Come See Mark at C.A.R.S., LLC

### for Tires & Computerized Alignment

600 E Pioneer, Crandon (715)478-5500



## ROLL-RITE OVERHEAD DOORS

GARAGE DOORS • OPENERS  
SALES • SERVICE • INSTALLATION  
RESIDENTIAL & COMMERCIAL  
OVER 20 YEARS EXPERIENCE  
**(715) 216-0100**  
PICKEREL, WI

# STORAGE CITY

West of Crandon on Hwy. 8  
(Across from the Brush Run track)  
STORAGE SPACE FOR BOATS, CARS, SNOWMOBILES,  
FURNITURE, MOTOR HOMES AND MORE!

**10 x 24 Granite Floor** as low as **\$485 a year**

Call us for all your storage needs!  
**1-800-698-2535 OR 715-478-2085**

# Creative

Screenprinting & Embroidery

**715-478-1075**  
119 N LAKE AVE, CRANDON, WI  
www.creativecrandonwi.com



## KANE CONSTRUCTION

JOE KANE

403 E. LAKEVIEW, CRANDON, WI 54520  
MOBILE: 715-889-1415  
FULLY INSURED FREE ESTIMATES

CUSTOM HOMES • REMODELS • GARAGES  
EXTERIORS • SEAMLESS GUTTERS

## SCRAP METAL

Prompt Service - Fair Prices



We'll Pick It Up  
Clam Truck Service • Dumpster Service  
Buying Cars and Trucks

Serving Central & Northern WI for over 50 years

### COUSINEAU RECYCLING

Hwy. 45 South • Antigo, WI  
Toll Free 866-330-3730 or 715-623-2372

## BUILDER/CONTRACTOR

NORTHERN LAKES CUSTOM BUILDERS  
Sam Marvin - Owner/Contractor

Projects from start to finish or anywhere in-between

**CUSTOM BUILT HOMES, CABINS & ADDITIONS, ALL TYPES OF RENOVATIONS - INTERIOR & EXTERIOR GARAGES, DECKS, ROOFING, SIDING**

For a FREE Estimate Call: 715-478-1258 Office or 715-889-1289 Cell



**ALLRED PAINTING**  
*"Enjoy a Fresh New Look"*  
**All Types of Painting:**  
 • Interior • Exterior •  
**All Types of Staining!**  
 Residential & Commercial  
 Fully Insured  
 Home of Quality  
**715-478-3147**

**JACOBS EQUIPMENT**  
**Elcho** - Chain saw supplies, bars, chains, sprockets and rims. Used chain saws. Repair service available. Prices too reasonable to quote. See the latest in new saws on Saturdays, 10:00 am to 6:00 pm. Trade in accepted. 715-275-3530. B26Etc

**Services**

**Frank Erler Concrete, Inc.**  
**Solid Poured Concrete Walls**  
*All Types of Flat Work*  
 16552 Pine Ridge Rd. Townsend, WI 54175  
**(715) 276-6083** (715) 850-0417 • Frank's Call  
 (715) 850-0149 • Rob's Call  
 Free Estimates Fully Insured

**NEED SERVICE OR REPAIRS ON YOUR CAR OR LIGHT TRUCK?**  
 "Licensed A/C Service"  
 Call  
**SCHROEDER'S AUTO SALES AND SERVICE**  
 Hwy. 55 Pearson  
**(715) 484-4131**  
 24 HR. Wrecker  
 Wholesale/Retail Dealer for  
 New Radiators, Heater Cores & Gas Tanks

**ANTIGO BLOCK CO.**  
 CONCRETE & LIGHTWEIGHT BLOCKS  
 PRE-CAST STEPS  
 CULTURED STONE®  
 Septic Tanks  
 Retaining Wall Block  
 Patio Blocks  
 Chimney Blocks  
 Natural Stone Veneer  
 Hearth & Sill Stones  
 Mortars • Pavers  
 Face Bricks  
 230 Milton St., Antigo  
**715-623-4837 Betc9**

**SIEBERT CONSTRUCTION, LLC**  
 Argonne, WI  
**Home & Cabin Repair, Remodeling, Decks, Garages, Siding, Interior & Exterior and More**  
 • Fully Insured  
 • 10 years experience  
 • Free Estimates  
**Contact: Bruce Siebert**  
**920-629-1119**  
 P43

**ARNOLD'S GARAGE**  
 Repairs - Collision Restoration  
 Brakes - Welding  
 ATVs, Cars, Light - Heavy Trucks  
 Equipment & Machinery  
 Quality - Affordable.  
 30 Years Experience  
**715-478-5740**  
 B22etc


Time is running out to buy a new Classic **OUTDOOR WOOD FURNACE** from Central Boiler to heat your home and hot water. Call 715-627-2665 today to slash your heating bill! View sale pricing at SchulzHeat.com  
**Schulz Heating & Cooling**  
 Wisconsin's Largest Central Boiler Dealer!  
 Betc32

**Keith's Carpet Installation Service**  
 You buy it, I'll install it!  
 30 Plus Years Experience  
 • Fully Insured •  
 • Free Estimates •  
 Call Keith at  
**715-674-2506** or  
**Cell: 262-689-6109**

Repair & service on all makes. Complete stock of all parts. New, used and rebuilt vacuums.  
**AVCO VACUUM CLEANER CO.**  
 Sales and Service  
 Ron Platek 10 W. Keenan  
 715-362-3376 Rhinelander, WI

**LOST:** A large otter sled near Jungle Lake. Black with some red stripes. If found, call 715-627-7606. P38

**TOM'S GARAGE**  
 1680 Cavour Ave., Wabeno, WI \* 473-6852 or 473-2429  
**Towing**  
 - Light Duty Car & Truck Repair - Exhaust Work - Oil Changes  
 - Welding - Tire Repairs - Mounting & Balancing  
 - Some New & Used Tires In Stock  
 Stop In Or Call For Appointment  
 Owned & Operated By Tom Renkas

**Northside Dental**  
 Dr. Chad Boers, Family Dentist  
 Antigo Native, Harvard Graduate, Locally Owned & Operated  
**NOW ACCEPTING NEW PATIENTS!**  
  
 N4013 Hwy 45 North  
 Antigo, Wisconsin, 54409  
 Office: 715-623-7425 Cell: 715-219-1030  
 www.northsidedental.com  
 We Offer: Preventive, Emergency, and Cosmetic, Mini-Dental Implants for denture stabilization. Care Credit Patient Plans are available and We Accept Credit/Debit Cards and Most Insurance Plans.

**Are your investments doing what you want them to do?**  
 Contact us for a FREE REVIEW and find out!  
 Located in the Laona State Bank, Laona, WI  
**Call: 715-674-7036 or 715-493-0946/0948 (cell).**

*Jim & Linda Bradle*  
  
 Securities & Investment Advisory Services offered through SII Investments, Inc. Member FINRA & SIPC and a Registered Investment Advisor. Laona Investment Center and Laona State Bank are not registered broker/dealers nor are they affiliated with SII Investments, Inc. Investments are not deposits, obligations of, or guaranteed by Laona State Bank or Laona Investment Center. Investments are not insured by the FDIC or any other agency of the United States. Investments are subject to investment risk, including the possible loss of principal amount invested.

**BUYING NOW**

Complete Autos.....	\$135/GT
Auto Bodies.....	\$110/GT
Tin/Appliances.....	\$90/GT
No. 1 Copper.....	\$2.10/lb
No. 2 Copper.....	\$1.87/lb
Misc. Aluminum.....	\$.42/lb
Yellow Brass.....	\$1.28/lb
Clean Copper Radiators.....	\$1.28/lb
Aluminum Rims.....	\$.55/lb
Clean Cast Brake Drums & Rotors.....	\$205/GT

**Aluminum Cans! 52¢/lb**

**Automotive Batteries \$5.00 Minimum or 17¢ lb.**

Prices Subject to Change Without Notice

**D.J.'S RECYCLING**  
 Hours: Mon. - Fri., 7:30 a.m.-3:00 p.m.; Sat. 8 - Noon  
**6516 Cty G, Cavour, WI, 715-649-3223**

**BULLSEYE COMPUTER SOLUTIONS**  
 Computer Repair  
 Call Keith at (715)-649-3363  
**WWW.BULLSEYECOMPUTERS.COM**

**Whouser Electric**  
 Commercial - Residential - New Construction - Industrial - Electrical Repairs  
**(715) 784-0134** 621 SOUTH FOREST CRANDON, WI 54520

**KARL APPLIANCE SALES & SERVICE**  
 40 Years of Service Experience behind every sale!  
**EVERYDAY LOW PRICES - NO GIMMICKS**  
 Delivery and Set-up Available


  
  
 THE LARGEST APPLIANCE SHOWROOM IN FOREST COUNTY  
**Over 135 Models on Display**  
  
  
**(715) 674-3935**  
 Take Hwy. 8 two miles west of Laona to Airport Lane, then two miles on Airport Lane to Karl's Lane.  
 Hours: Mon. - Fri. 9-5; Sat. 9-12 After hours by appointment

**Community Blood Center hopes giving blood will become New Year's Resolution**  
 APPLETON/FOX CITIES, DECEMBER 30 – If you're looking for a meaningful resolution to make for the New Year, the Community Blood Center is hoping you'll consider giving blood. January is National Blood Donor month, which recognizes the importance of the volunteer blood donor program and the impact blood donors have on their communities.  
 Blood drives and volunteer donors are needed more than ever at this time of year when there are typically shortages because there are fewer blood drives and donors are on vacation. The winter season also brings with it inclement weather and colds and flu that can keep donors away.  
 As donors struggle with cold or flu symptoms that can hang on for weeks, The Community Blood Center's collections are down, and that means more healthy volunteers are needed to donate immediately to help ensure adequate blood products are on the shelves for the 18 area hospitals served. Donations help patients with cancer and other diseases, organ transplant recipients, and help save the lives of accident victims.  
 "We feel the impact flu season has on blood collections this time of year. Blood donors can only give blood if they are feeling well on the day of donation," said Dr. Todd Straus, Chief Medical Officer at The Community Blood Center. "I urge anyone who is feeling healthy to take a few minutes in their busy schedule to share their good health and save lives by donating blood."  
 Donated red blood cells must be used within 42 days of collection. Platelets within 5 days. Plasma can be frozen for up to 1 year. Individuals with serious injuries

from a major automobile accident can require 50 units (pints) of blood or more. Seriously burned patients can require 20 units or more. The components of one pint of donated blood can help save the lives of three people.  
 The Community Blood Center is a non-profit organization that has worked with generous blood donors to provide a steady, reliable blood supply for hospital patients for over 50 years. Volunteers who donate blood support the local blood supply at 18 hospitals in Wisconsin and Michigan. Partnerships are created with community groups, schools, churches, and businesses to hold over 125 blood drives each month. On average, the Community Blood Center must collect about 1,200 pints of blood every week to meet the needs of hospital patients served. Donor centers are located in Appleton, Little Chute, Oshkosh, and Woodruff.  
 Appointments may be made online at www.communityblood.org or by calling 800-280-4102.

**American Legion Post 44 "Gunless" Poultry Shoot**  
 Don't miss the next American Legion "Gunless" Poultry Shoot, on Saturday, January 3, 2015 at the Backhaus Sportsmen's Retreat in Wabeno, starting at 1:00 p.m. Bring along friends.  
 They will be raffling off packages of meat, poultry, sausages, bacon, beverages, gifts, and gift certificates, donated by local businesses. There will also be 50/50 raffles.  
 Come on in, win a prize, and help a veteran. Everyone is welcome.

**Climate Change** Cont. from pg. 1  
 articles and often take quizzes or complete educational activities. It's all free.  
 Participants in Changing Weather and Climate in the Great Lakes Region will learn, through short lectures and activities, about how the mid-latitude location and influence of the five massive freshwater lakes combine to create exhilarating weather systems each season.  
 Along with the online learning, participants are invited to attend four discussions about the climate-change class at the Crandon Public Library that will be facilitated by climate experts.  
 Participation in the weekly online lectures & activities is important to benefit from the weekly facilitated discussion. Individuals can view the online lectures & activities on their own, but a weekly session will be offered at the library for those preferring to do it in a group setting. The weekly facilitated discussion will be at the library.  
 The online class will be taught by Steve Ackerman, UW professor of Atmospheric and Oceanic Sciences and director of the Cooperative Institute for Meteorological Satellite Studies, and Margaret Mooney, the cooperative institute's director of education and public outreach. The class also will incorporate information from NOAA's National Weather Service Weather-Ready Nation initiative and findings from the recent National Climate Assessment and the Wisconsin Initiative on Climate Change Impacts.

  
**RECYCLING IS COOL**



## NORTHERN HEALTH CENTERS

**Northern Health Centers, Inc. is seeking a Full Time Medical Assistant.** Successful candidate will have at least two to five years' experience working in a medical clinic as a Medical Assistant and a graduate from an accredited Medical Assistant program; certification preferred. This position requires great attention to detail, initiative, excellent patient nursing and education / communication skills, and a caring personality. This position may include some evening hours and Saturday rotation. This position will be traveling between the White Lake and Lakewood facility.

**To apply please send or email your resume to: Human Resource Manager, PO Box 179, Lakewood, WI 54138 or email kellys@nhcmadden.com, no later than January 9, 2015.**

Northern Health Centers, Inc. is an Equal Employment Opportunity.

## Help Wanted

Local dental office has an opening for a friendly, energetic, and outgoing near full-time dental assistant/receptionist whose daily duties would include assisting the doctor with all aspects of patient care, answering phones and scheduling appointments, insurance and billing, taking radiographs, sterilizing instruments, performing basic laboratory procedures, cleaning, and ordering/organizing supplies.

Dental experience is required and pay is based on experience. Approx 28 hours per week (Tues, Wed, Fri full day each day) to start. If interested please reply with resume which includes 3 references. Call 715-623-7425 or 715-219-1030 with questions.

### Revolving Loan Fund Cont. from pg. 1

- \*\* Facade and building renovation
- \*\* Landscape and property improvements, and
- \*\* Machinery and equipment.

#### Loan Characteristics:

Durations vary according to the use of funds. A loan used for working capital, for instance, may range from 3 to 5 years, while loans for equipment are up to 10 years and real estate loans may last 15 to 20 years.

Loan amounts range from small (\$1,000 to \$10,000) to mid-sized (\$25,000 to \$75,000), with larger (\$100,000 to \$250,000 and up) amounts available when the borrower has secured a substantial sum from private lenders.

#### Capitalizing a Revolving Loan Fund:

Initial funding, or capitalization, of a revolving loan fund usually comes from a combination of public sources, such as the local, state, and federal governments, and private ones like financial institutions and philanthropic organizations. Funding acquired for capitalization is usually the equivalent of a grant – it does not need to be paid back.

Most revolving loan funds have at least one local public source for capitalization combined with other sources. If capitalization is exclusively local, the RLF may have greater flexibility in lending, as state and federal involvement tend to include restrictions that may not fit local business needs.

State and local governments often use one or a combination of the following to capitalize an RLF: tax set-asides, general obligation bonds, direct appropriations from the state legislature, annual dues from participating counties or municipalities, and funds directed from the state lottery.

The federal government is another common source of capitalization. Communities may apply for funding from the United States Department of Agriculture (via the Rural Economic and Community Development Administration), Housing and Urban Development (via Community Development Block Grants), and the Department of Commerce (via the Economic Development Administration).

#### Standards and Results:

While RLFs take on projects with above average risk, borrowers are held to standard financial requirements in loan security. Before a loan is issued, a business or prospective business usually supplies the following documentation:

- \*\* Business plan
- \*\* Business experience and management information
- \*\* Credit history and financial statements
- \*\* Sufficient collateral to repay bank and RLF

## Help Wanted

**WANTED:** Flat bed/loader truck driver. Experience required. Call Jim Ambrosius at 715-889-0501. Betc36

### Still Smoking

207 N. Lake Ave.  
Crandon

### Close out while supplies last!

Crown E-Juice 12ml was \$5.99, now \$3.99  
Midwest E-Juice 10 ml was \$5.99, now \$2.00  
We have the only build your own E-cigarette shop in the county!

Stop, shop and save at Still Smoking.

We are your E-cigarette headquarters.

### Still Smoking

on Main Street  
Crandon, between  
Duck's and Pickers.  
(715) 478-4059  
Betc22

### Position: Substance Abuse/Mental Health Counselor

Provide comprehensive counseling and case management services to individuals presenting with AODA issues. Experience preferred, but will train.

**Status:** Part time/Full time **Shifts:** First

**Salary:** Based on Education and Experience. Competitive benefit package.

#### Job Requirements:

- Certified SAC-IT, SAC or CSAC through the State of Wisconsin
- Excellent written and verbal communication skills
- Solid computer skills and competency
- Strong organization and interpersonal skills

#### Essential Duties & Responsibilities:

- Engage patient in treatment
- Conduct individual and group therapy
- Prepare initial treatment plans and aftercare
- Participate in professional staffing
- Maintain records that are in compliance with Wisconsin regulations

It is the policy of Options Counseling Services not to discriminate against any employee or any applicant for employment because of age, race, religion, color, handicap, sex, physical condition, developmental disability, sexual orientation or national origin.

**How to Apply:** Forward a letter of interest and current resume including references to: Options Counseling Services, Bruce Decorah - Manager, PO Box 1550, Rhinelander, WI 54501. E-mail: bdecorah@optionscs.net.

**Application deadline is January 9, 2015.**

**FOR SALE:** Old records (LPs), golf cart, power washer, Yakima cadet car top carrier, Madame Alexander collector dolls, 2 Stainless Chafing pans with lids & Sterno. Call 715-478-2129. P38

#### funding

\*\* Other personal or corporate guarantees on the project, and

\*\* Cash flow projections.

As a public investment instrument, revolving loan funds are expected to result in public goods – namely projects contributing to economic growth and community revitalization. Borrowers therefore, must address performance measures established by the loan administrator such as:

- \*\* Number and type of jobs created or retained
- \*\* Increase in tax revenue
- \*\* Private funding relative to public investment, and
- \*\* Benefits to low and moderate-income citizens, from business ownership to job opportunities.

#### Administration:

A Loan Review Committee or board of directors takes responsibility for reviewing loan proposals, designating of an administrative body (can be public, nonprofit, or private), and contracting a local bank for the loan fund's portfolio management responsibilities. The committee or board is usually a combination of legal, private lending, business, community development, local government professionals and community members with varied backgrounds.

The FCEDP Revolving Loan Fund is modest in comparison to others, but the hope is to have more entities invest in our county and communities once a proven record of success is established. The small businesses is our focus until larger sums can be secured from other entities. The hope is lending will begin by the end of January. For more information about this fund please contact:

Joshua Jameson  
Executive Director  
Forest County Economic Development Partnership  
P.O. Box 96  
116 S. Lake Ave.  
Crandon, WI 54520  
(715) 478-3450, Office

### For Old Time's Sake



Back in the early 70's, the niece of Isaac Dinesen and great niece of Wilhelm Dinesen, Ingeborg, visited Mole Lake and stopped in to chat with Alice Randall. Ms. Dinesen was exploring family history. Wilhelm Dinesen was the Danish adventurer that spent a couple of years, in the early 1870's, living and running a trading post in the restored log cabin in Mole Lake.

## Job Posting Town of Laona

The Town of Laona is accepting applications for a full time position with the Laona Streets Department.

Applicants must have a valid driver's license with a clean driving record and CDL endorsement.

Applications can be picked up at the Laona Town Hall, 5146 Linden Street, Laona, WI 54541. Applications will be accepted until 3 p.m. Tuesday, January 20th.

Any questions please call the Town Hall 715-674-4071.

Erin Lane, Clerk/Treas.

### A CAREER OPPORTUNITY AT

POTAWATOMI  
CARTER  
CASINO · HOTEL

### DROP TEAM MEMBER

Status: Full-Time, Hourly

#### Purpose

Responsible for the efficient count and drop per PCCH policies (removal, exchange and collection of cash boxes and TITO tickets found inside all slot machines and the removal of currency and documentation from table games boxes for verification and count).

#### Qualifications

- High school diploma or equivalent is preferred.
- Accurate cash-handling experience and good math skills required.
- Basic computer experience preferred.
- Ability to uphold complete confidentiality is required.
- Must display professionalism when representing PCCH.
- Must work well with people, possess excellent guest service skills and sensitivity to diverse cultures.

#### Conditions of Employment

- Must be at least 18 years old and have no misdemeanor or felony convictions involving theft, fraud or embezzlement.
- Must pass pre-employment and random drug testing.
- Must obtain and maintain a Gaming License issued by the Forest County Potawatomi Gaming Commission.
- Must satisfactorily complete an introductory period.

Complete job description available at [www.cartercasino.com](http://www.cartercasino.com)

**Posting Information:** TRIBAL/NATIVE AMERICAN PREFERENCE APPLIES

**Post Date:** January 5, 2015 **Closing Date:** January 26, 2015

Submit applications/resumes to: Jean Kluss, Human Resources Manager  
618 State Hwy 32, Wabeno, WI 54566  
FAX: 715.473.6021 -or- E-mail: [jkluss@cartercasino.com](mailto:jkluss@cartercasino.com)  
or online at [www.cartercasino.com](http://www.cartercasino.com)

**CALL Pioneer Express  
715-478-3640  
And order your CUSTOM DESIGNED  
Graduation Announcements**



# Vehicles & Heavy Equipment

## Wanted

**WANTED:** All used or used up 3 point equipment. 715-623-5678 or 715-623-6707. Petc1



**FOR SALE:** '99 Dodge Ram 3/4 ton pickup. 2 wheel drive. Low mileage, 83,000 miles. Not driven much. New brakes, new tires. In good shape. Call 715-484-2204. B38

## CHARLIE'S AUTOMOTIVE

**TOWING NOW AVAILABLE**  
Automotive Transmissions, 4-Wheel Drive Repair  
All transmissions dyno tested for top quality performance & long life. All transmissions backed by 12 month, 12,000 mile warranty.  
Satisfaction guaranteed. Delivery available.  
Antigo • (715)623-7756

**FOR SALE:** Invacare Zoom 400. Battery powered scooter. Excellent condition. \$800. Call 715-478-5916. Leave message if no answer. P38

**FOR SALE:** Ford truck. 1999 F250 V8 club cab 4x4. New exhaust and tune up. Very little rust. 180K. \$2,950 or offer. Call 715-478-5278. P38

**FOR SALE:** Buick, Lucerne CXL 2009 1/2. 75,000 miles. Loaded. Pristine condition, wife died. Gold mist metallic. 3.9L V6. Asking \$17,500 (new \$36,000). Call 920-465-0668. P38

## Argonne Auto Detailing



**TODD PROPSON, OWNER**

8871 Grand Ave. (Cty. G)

Argonne, WI

Call or stop in for a quote!

715-521-0616

- Carpet & upholstery vacuumed and/or shampooed
- Interior cleaning - windows, vinyl, etc.

## Fun Facts About New Year's From the Net

New Year's is approaching, a time when millions of people will celebrate with food, new resolutions or a even kiss as the clock strikes 12. But how much do you know about the holiday? Here are 10 fun facts about New Year's.

The first New Year's celebration dates back 4,000 years. Julius Caesar, the emperor of Rome, was the first to declare Jan. 1 a national holiday. He named the month after Janus, the Roman god of doors and gates. Janus had two faces, one looking forward and one looking back. Caesar felt that a month named after this god would be fitting.

Forty-five percent of Americans make New Year's resolutions. The top resolutions are: to lose weight, get organized, to spend less and save more, to stay fit and healthy, and to quit smoking. While nearly half of all Americans make resolutions, 25 percent of them give up on their resolutions by the second week of January.

Be sure to eat leafy greens on New Year's. Tradition says that the more leafy greens a person eats, the more prosperity he or she will experience (what an incentive for staying healthy!). Tradition also says that legumes bring prosperity because beans and peas look like coins. No wonder why so many people eat black eyed peas on Jan. 1.

Many people ring in New Year's by popping open a bottle of champagne. Americans drink close to 360 million glasses of sparkling wine during this time. The bubbly stuff dates back to the 17th century, when the cork was invented.

About 1 million people gather in New York City's Times Square to watch the ball drop. The Times Square New Year's Eve ball drop came about because of a ban on fireworks. The first ball in 1907 was 700 pounds and was lit with 100 25-watt lights. The current ball puts the old one to shame (thanks to technology). Today, it is covered in 2,688 crystals, is lit by 32,000 LED lights, weighs 11,875 pounds and is 12 feet in diameter.

Remember the last scene in When Harry Met Sally, when Harry references a song after he and Sally kiss? It was Auld Lang Syne, a song traditionally sung at the end of New Year's parties. Poet Robert Burns wrote it in 1788. Though most people do not know the words to Auld Lang Syne, the overall message is that people have to remember their loved ones, dead or alive, and keep them close in their hearts.

If Santa is the most common symbol associated with Christmas, then Baby New Year is the symbol most commonly associated with...you guessed it, New Year's! Baby New Year is often seen in a diaper, black top hat, and a sash showing the numbers of the new year. Myth states that he matures into an old man during the year.

Make sure to be surrounded by family or loved ones on New Year's Eve. The first person you come across in the new year could set the tone for the next 12 months. This applies to couples, as well. If a couple celebrating New Year's together does not kiss, the future of the relationship might be splitsville, so be sure to lay one on your significant other.

At the Mummers Parade in Philadelphia, 10,000 participants step through City Hall and perform in unique costumes. The parade dates back to mid-17th-century, incorporating elements from Irish, German, English, Swedish and other European heritages. The parade itself is divided into five divisions: a comic division, wench brigades, fancy division, string bands, and fancy bridges. If you are in the area for New Year's, be sure to check out this event.

According to statistics from the National Insurance Crime Bureau, vehicles are stolen on New Year's Day more than any other holiday. Don't think your old car is safe, either. In 2011, the 1994 Honda Accord was the most stolen car. To discourage car theft, make sure your car is in a populated area and always take your keys.

CONSULTING FORESTRY SERVICES

BUYERS OF STANDING TIMBER  
Forest Management  
Timber Sales  
Timber & Wood Brokering  
Timber Marking  
Timber Cruising  
MFL Plans  
Logging

**CFM**  
Connor Forest Management LLC

Grandon, WI  
715-889-3600  
Robert Connor Jr.

[www.connorforestmanagement.com](http://www.connorforestmanagement.com)



**FOR SALE:** New Holland Model 55 Side Delivery Hay Rake. \$1,000. Call 906-221-0420 or 715-889-4935. P41

## Know the 10 warning signs of Alzheimer's disease

### Early detection empowers families to plan for the future

Visiting with relatives over the holidays may raise questions about the physical and cognitive health of family members. The Alzheimer's Association sees a rise in calls to its free 24/7 Helpline 800.272.3900 during and after the holiday season as people visit with those whom they may not see as frequently during the year. The Alzheimer's Association encourages people to call their Helpline should they have questions or concerns about a memory-impaired family member or friend.

Although some change in cognitive ability can occur with age, serious memory problems are not a part of normal aging. Recognizing the difference can help to identify when it may be time to see a doctor. The Alzheimer's Association has a check list of ten warning signs, along with examples of normal aging. Each person may experience one or more of the warning signs in different degrees.

#### Alzheimer's Association 10 Warning Signs of Alzheimer's

1. Memory loss that disrupts daily life. One of the most common signs of Alzheimer's is memory loss, especially forgetting recently learned information. Others include forgetting important dates or events; asking for the same information over and over; relying on memory aides (e.g., reminder notes or electronic devices) or family members for things they used to handle on one's own.

What's typical: Sometimes forgetting names or appointments, but remembering them later.

2. Challenges in planning or solving problems. Some people may experience changes in their ability to develop and follow a plan or work with numbers. They may have trouble following a familiar recipe or keeping track of monthly bills. They may have difficulty concentrating and take much longer to do things than they did before. What's typical: Making occasional errors when balancing a checkbook.

3. Difficulty completing familiar tasks at home, at work or at leisure. People with Alzheimer's often find it hard to complete daily tasks. Sometimes, people may have trouble driving to a familiar location, managing a budget at work or remembering the rules of a favorite game.

What's typical: Occasionally needing help to use the settings on a microwave or to record a television show.

4. Confusion with time or place: People with Alzheimer's can lose track of dates, seasons and the passage of time. They may have trouble understanding something if it is not happening immediately. Sometimes they may forget where they are or how they got there.

What's typical: Getting confused about the day of the week but figuring it out later.

5. Trouble understanding visual images and spatial relationships. For some people, having vision problems is a sign of Alzheimer's. They may have difficulty reading, judging distance and determining color or contrast. In terms of perception, they may pass a mirror and think someone else is in the room. They may not realize they are the person in the mirror.

What's typical: Vision changes related to cataracts.

6. New problems with words in speaking or writing. People with Alzheimer's may have trouble following or joining a conversation. They may stop in the middle of a conversation and have no idea how to continue or they may repeat themselves. They may struggle with vocabulary, have problems finding the right word or call things by the wrong name (e.g., calling a "watch" a "hand-clock").

What's typical: Sometimes having trouble finding the right word.

7. Misplacing things and losing the ability to retrace steps. A person with Alzheimer's disease may put things in unusual places. They may lose things and be unable to go back over their steps to find them again. Sometimes, they may accuse others of stealing. This may occur more frequently over time.

What's typical: Misplacing things from time to time, such as a pair of glasses or the remote control.

8. Decreased or poor judgment. People with Alzheimer's may experience changes in judgment or decision-making. For example, they may use poor judgment when dealing with money, giving large amounts to telemarketers. They may pay less attention to grooming or keeping themselves clean.

What's typical: Making a bad decision once in a while.

9. Withdrawal from work or social activities. A person with Alzheimer's may start to remove themselves from hobbies, social activities, work projects or sports. They may have trouble keeping up with a favorite sports team or remembering how to complete a favorite hobby. They may also avoid being social because of the changes they have experienced.

What's typical: Sometimes feeling weary of work, family and social obligations.

10. Changes in mood and personality. The mood and personalities of people with Alzheimer's can change. They can become confused, suspicious, depressed, fearful or anxious. They may be easily upset at home, at work, with friends or in places where they are out of their comfort zone.

What's typical: Developing very specific ways of doing things and becoming irritable when a routine is disrupted.

Early diagnosis of Alzheimer's disease or other dementia is an important step in getting appropriate treatment, care and support service. Additional benefits to early diagnosis are as follows:

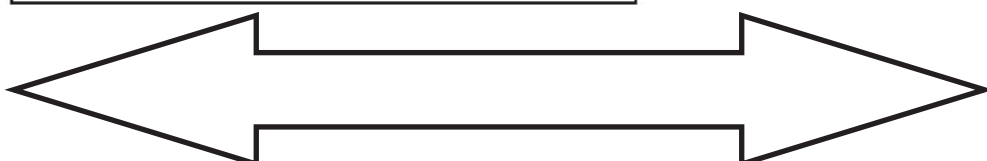
#### Benefits of an early diagnosis of Alzheimer's disease

- Benefit from treatments that may improve symptoms and help maintain a level of independence longer
- Have more time to plan for the future
- Increase chances of successfully finding a clinical drug trial through Alzheimer's Association TrialMatch, helping advance research
- Participate in decisions about their care, transportation, living options, financial and legal matters
- Develop a relationship with doctors and care partners
- Benefit from care and support services, making it easier for them and their family to manage the disease

Anyone with questions about Alzheimer's disease and/or seeking information should contact the Alzheimer's Association's 24/7 toll-free help line at 800.272.3900. Experts are available to take calls from individuals concerned with their own cognitive health as well as from family members and friends who may be concerned about a loved one and are seeking resources.

#### The Alzheimer's Association

The Alzheimer's Association is the world's leading voluntary health organization in Alzheimer care, support and research. Our mission is to eliminate Alzheimer's disease through the advancement of research, to provide and enhance care and support for all affected, and to reduce the risk of dementia through the promotion of brain health. Our vision is a world without Alzheimer's. Visit [alz.org](http://alz.org) or call 800-272-3900.





# PICKEREL AUTO BODY LLC

W6482 Co Rd A • Pickerel, WI 54465 • 715-484-2402 • pickauto@frontier.com

*"We meet the nicest people by accident"*




**C-Us-4 All Your Local Wireless Needs!**


**Us-4**

**Cellcom** 5 STAR AGENT

<b>Suring</b> 920-842-4054 827 Main Street	<b>Shawano</b> 715-524-4316 152 S. Main Street	<b>Townsend</b> 715-276-1180 17939 Hwy 32
--	--	---

**ALL YOUR PROTECTION UNDER ONE ROOF.®**

CALL FOR A NO-OBLIGATION FREE QUOTE.



**Tyler Sherry Agency**  
202 N Lake Ave  
Crandon, WI 54520  
Bus: (715) 478-3646  
1-800-MY-AMFAM



**FOR SALE:** Old records (LPs), golf cart, power washer, Yakima cadet car top carrier, Madame Alexander collector dolls, 2 Stainless Chafing pans with lids & Sterno. Call 715-478-2129. B37

**Laona students of the month**



The School District of Laona would like to congratulate the students of the month. They are Holly Gilligan, Abigail Peterson, Nate Mihalko, Gavin Connor, Canton Chrisman, Hunter Cronauer, Josie Lempel, Tyler Piton, Seth Lempel, and Zach McLaughlin. Winner of the t-shirts were: Holly Gilligan, Canton Chrisman and Gavin Connor.



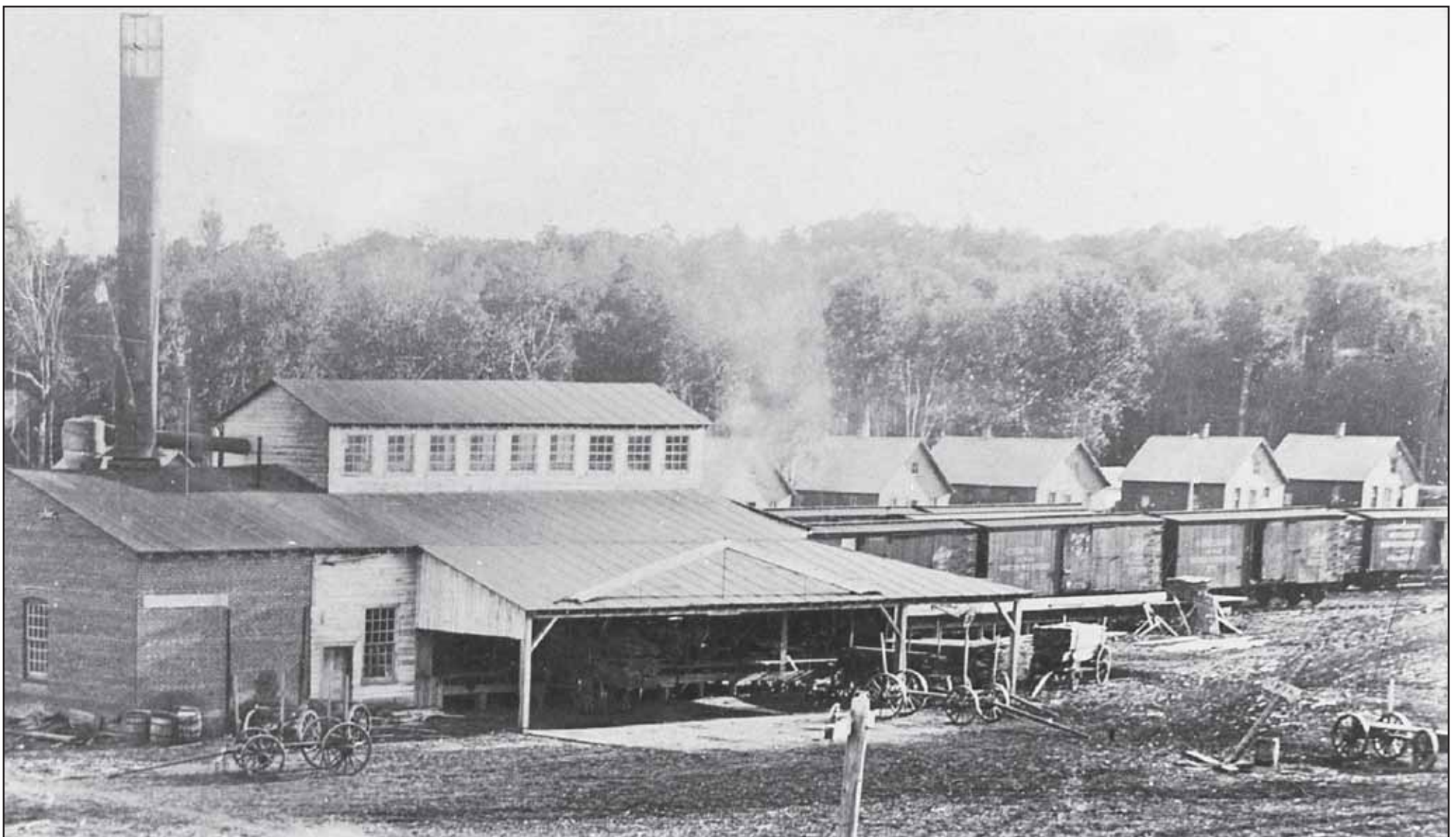
**KEEP OUR PRINTER WORKING!**

Bring in Your Orders For...

Envelopes • Business Cards  
Raffle Tickets • Posters • Letterheads  
Carbonless Business Forms • Etc.

**Pioneer Express**      **715-478-3640**  
1-800-234-2152

**For Old Time's Sake - Blackwell**



There aren't many people walking around today that can remember when the big Flanner sawmill was running full tilt in Blackwell. The Flanners built most of the buildings in the town, including the lovely big home that is now the Nu-Roc Nursing Home. The Great Depression ended the success of the Flanners in Blackwell. By 1932, the mill was in bankruptcy. Connor Lumber and Land tried to revive the mill in the 1930's, but the depth of the depression was just too hard to overcome, and the machinery and the Flanners went elsewhere.